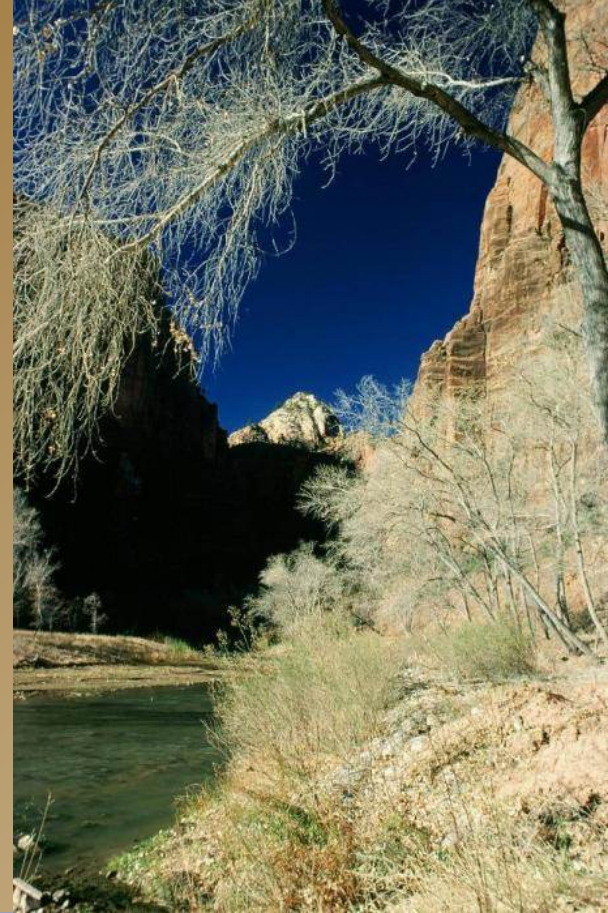


Meeting Long-Term Needs: *What about the Rivers' Needs?*

April 8, 2014

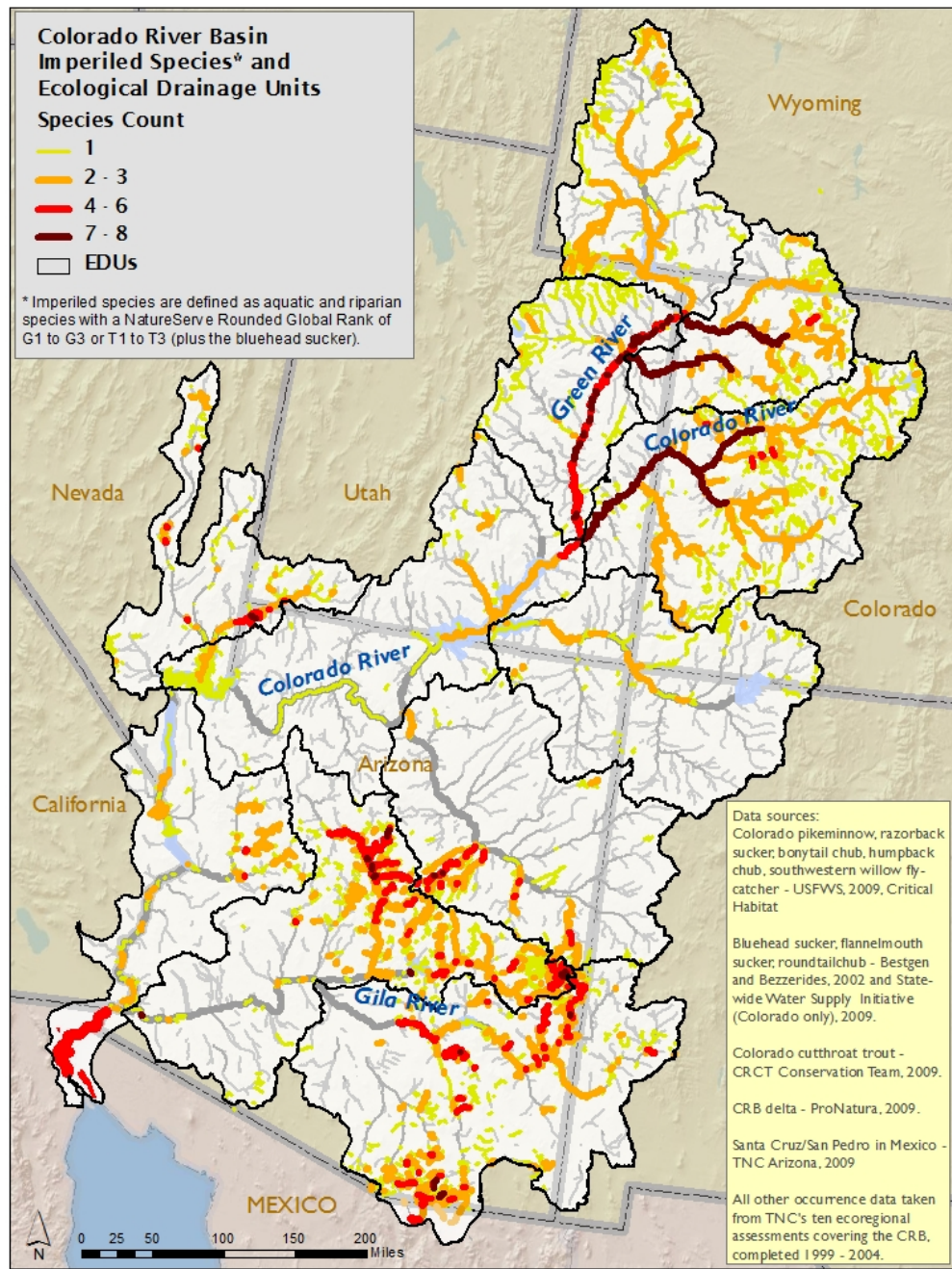


**Colorado River Basin
Imperiled Species* and
Ecological Drainage Units**

Species Count

- 1
- 2 - 3
- 4 - 6
- 7 - 8
- EDUs

* Imperiled species are defined as aquatic and riparian species with a NatureServe Rounded Global Rank of G1 to G3 or T1 to T3 (plus the bluehead sucker).



Data sources:
Colorado pikeminnow, razorback sucker, bonytail chub, humpback chub, southwestern willow flycatcher - USFWS, 2009, Critical Habitat

Bluehead sucker, flannelmouth sucker, roundtailchub - Bestgen and Bezeides, 2002 and State-wide Water Supply Initiative (Colorado only), 2009.

Colorado cutthroat trout - CRCT Conservation Team, 2009.

CRB delta - ProNatura, 2009.

Santa Cruz/San Pedro in Mexico - TNC Arizona, 2009

All other occurrence data taken from TNC's ten ecoregional assessments covering the CRB, completed 1999 - 2004.

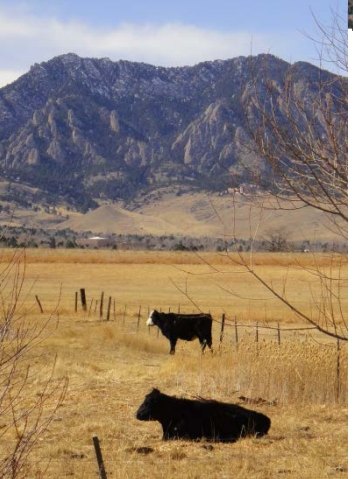
How did the Basin Study address environmental and recreational values?

- Study was focused on water supply
- Env & Rec needs were considered as metrics, not demands
- BOR's model unable to assess Env & Rec flows at scale or timing that mattered
- Env & Rec “solutions” not considered



Workgroup Objectives

- Identify 2-6 focal reaches
- Assessment of focal reaches (e.g., river condition, resources, processes, data gaps, etc)
- Explore existing mechanisms or programs that protect or improve ecological and rec. resources, while supporting other management goals
- Explore broader opportunities beyond focal reaches (sustainable funding, water banking, etc)



Guiding Principles

- Seek solutions that promote environmental resiliency.
- Recognize the importance of river-based recreational benefits to local economies.
- Recognize the importance of ecological and recreational resources.
- Acknowledge tradeoffs among resource management actions.
- Use the best science available.
- Comport with current laws and governance.
- Complement other workgroups.
- Optimize benefits through collaboration.



Selection Criteria

Goal 1: Protect and Restore River Ecological Health

Imperiled Species

Environmental Attributes

Goal 2: Protect and Improve River Recreational Resources

Commercial/
Private
Recreation
Values

Coldwater Sport
Fishery

Goal 3: Limit or Manage Tradeoffs with other Water Uses

Other
Resources
Coordination

Goal 4: Geographic Location and Regional Importance

Regional
Importance of
Ecological/
Recreational
Improvement

Number of
National Park/
Public Lands

Goal 5: Flexibility of Solutions

Legal and
Regulatory
Constraints

Existing
Process
Constraints

RECLAMATION

Challenges (and Successes?)

- Workgroup membership & structure
- Coordination with other Workgroups
- Concern that potential solutions could be viewed interfering with agency management obligations
- How will this information get used?
- Disclaimer
- Many stakeholders would rather not have to work on Env & Rec issues
- But we are talking . . .



Everything is better with water!

