

The background is a light blue gradient with several realistic water droplets of various sizes scattered across it. The droplets have highlights and shadows, giving them a three-dimensional appearance.

OUR SHARED STRUGGLE AND OUR SHARED FUTURE: CREATING A NEW LEGACY

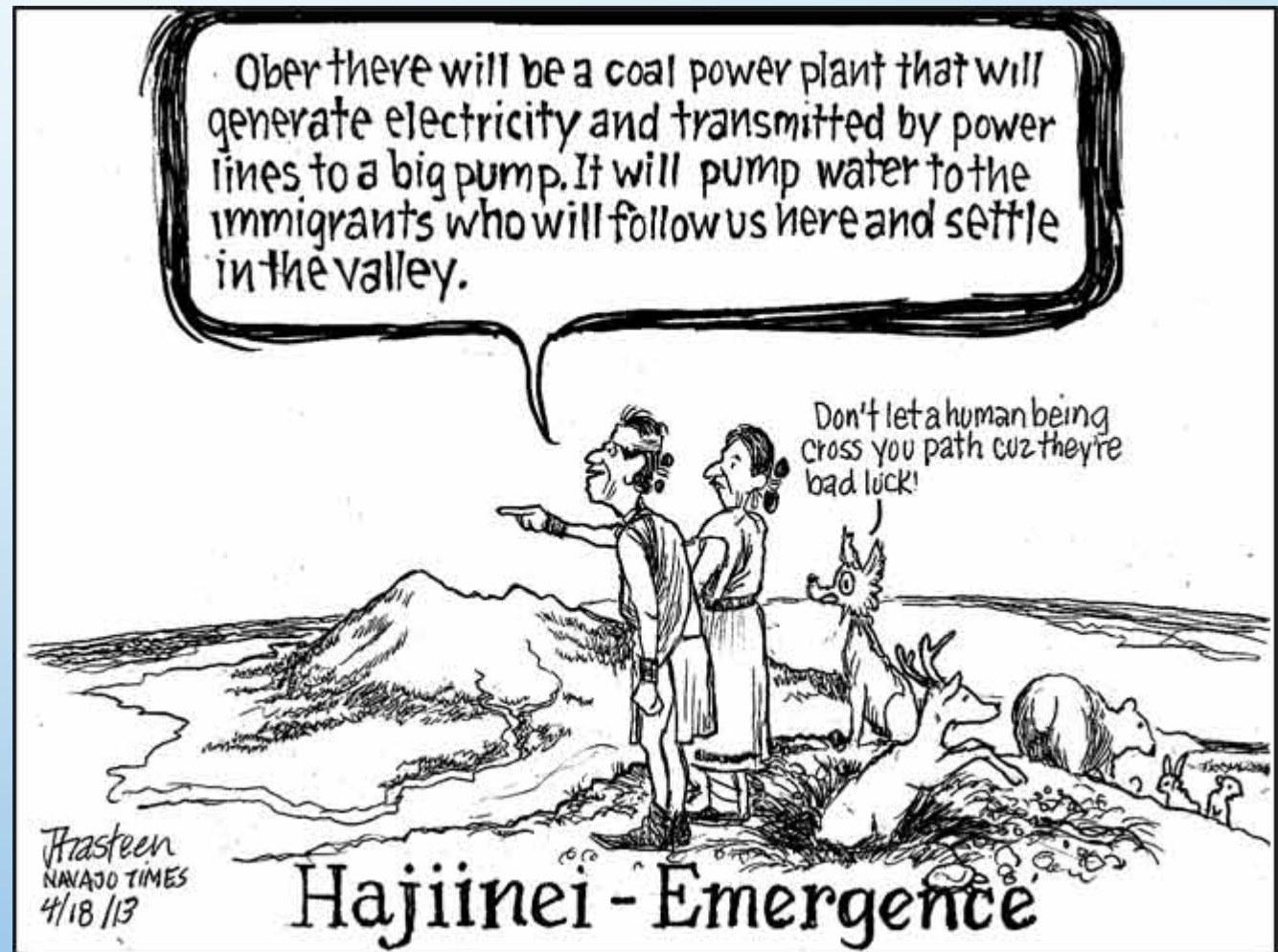
JANENE YAZZIE, SENIOR PLANNER

LITTLE COLORADO RIVER WATERSHED CHAPTERS ASSOCIATION

WATER ON THE NAVAJO NATION

- CONTAMINATION
- RESOURCE EXPLOITATION
- ENVIRONMENTAL INJUSTICE

=> WE DID NOT CREATE THESE PROBLEMS FOR OURSELVES



ENVIRONMENTAL INJUSTICE

If you're born Navajo, you're 67 times more likely not to have a tap or toilet in your house than if you're born black, white, Asian- or Hispanic-American," George McGraw, DIGDEEP

DEVELOPED AREAS

**FAMILY OF FOUR, USING 100 GALLONS
PER DAY PER PERSON = \$34.29/ MONTH**



RESERVATION

**FAMILY OF FOUR USING 100 GALLONS
PER DAY PER PERSON= \$54.99/MONTH
(NTUA)**

**HAULING FROM REGULATED WATER
SOURCE= \$30- \$100 PER 100 GALLONS**

**HAULING FROM UNREGULATED WATER
SOURCE= 100 GALLONS \$25-\$35**

AVERAGE USE IS 7 GALLONS A DAY

CORPORATIONS

**NGS- NN WAIVER OF 50,000 AFY TO NGS
FOR FREE- BENEFITS SRP AND CAP**

= 325,945 GALLONS PER ACRE FOOT

= \$1,831.80 PER ACRE FOOT

=\$91,590,545.00 IN LOST REVENUE

**AVERAGE SALARY FOR A PLANT LABORER=
\$24,000**

SENIOR ENGINEER \$97,000

\$19,200,000-\$77,600,000

WHAT DOES THIS LOOK LIKE?



DUE TO DIVERSION, BANKING AND STORAGE MADE POSSIBLE BY THE RESOURCE EXPLOITATION OF THE NAVAJO AND HOPI TRIBES THERE IS MORE WATER MADE AVAILABLE FOR ONE HOUSING AREA, ONE RESORT, THAN THERE IS ACCESSIBLE FOR ENTIRE COMMUNITIES ON OUR RESERVATIONS.



This problem is not going to be solved by a simple “seat” at the “table”

WHAT IS THE MEANING OF SUSTAINABILITY?

WESTERN FRAMEWORK

TAKE WHAT YOU WANT; MINIMIZE
PRODUCTIONS COSTS MAXIMIZE PROFITS TO
MAINTAIN STATUS QUO.

MANUFACTURED DEMANDS TREATED AS NEED

NAVAJO TRADITIONAL FRAMEWORK

TAKE ONLY WHAT YOU NEED AND GIVE BACK
MORE THAN YOU TAKE

*RESPECTING NEEDS OF FUTURE GENERATIONS
JUST AS IMPORTANT, IF NOT MORE
IMPORTANT, AS MEETING PRESENT NEEDS.*

VALUES

WESTERN

- DEVELOPMENT/PROGRESS FOR THE GREATER GOOD
- RESOURCES INANIMATE AND EXPLOITABLE
- INDIVIDUALISM- EVERYTHING IS SEPARATE AND HAS A SEPARATE “VALUE”



TRADITIONAL

- HEALTH, WELL-BEING, PROSPERITY FOR ALL
- RESPECT FOR ALL LIFE AND ALL ELEMENTS
- COMPLEX COMMUNITIES- EVERYTHING IS CONNECTED- SACRED

WE ARE ALL SACRED BEINGS



“Although they [Navajo and Hopi] are entitled to more, they don’t know how to use it” — former Sen. Jon Kyl to Senate on SB 2109



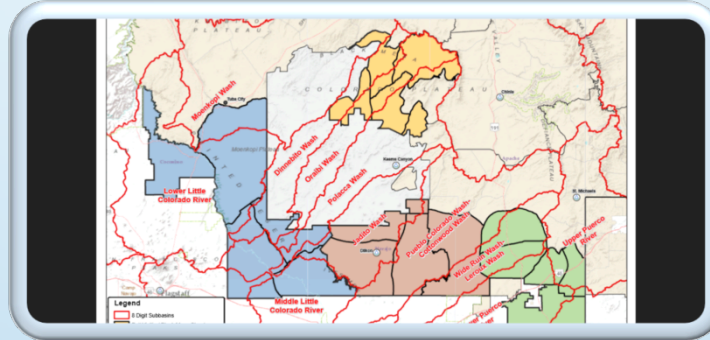
PROBLEMS WITH WATER SETTLEMENTS

- “QUANTIFICATION” BASED ON PRACTICAL IRRIGABLE ACREAGE
- WAIVER OF QUALITY- PRIVILEGES INDUSTRIES
- ACCESS- DOES NOT ALWAYS MEAN DRINKABILITY
- CORPORATE EXPLOITATION & PRIVATIZATION

WHAT LEGACY ARE WE CREATING FOR OUR FUTURE GENERATIONS?



LITTLE COLORADO RIVER WATERSHED CHAPTERS ASSOCIATION



EQUITY

WILDLIFE- INSECT, REPTILES, MAMMALS

PLANT LIFE

SOIL HEALTH

SACRED ELEMENTS

YOUTH

RESPONSIBILITY

RE-ESTABLISHING OUR RELATIONSHIP TO
OUR HOMELAND

INVESTMENT IN THE NEXT GENERATION

OWNERSHIP

OWN OUR MISTAKES TO OWN OUR
SUCCESSSES

DO IT OURSELVES- SWEAT EQUITY

BUILD A FUTURE THAT REFLECTS OUR
VALUES TO MEET OUR VISION

1. WE ARE NOT POOR

2. THE LAND IS HOLY AND THE PEOPLE ARE SACRED

3. WE DON'T NEED SOMEONE TO SAVE US AND WE DON'T WANT TO GO DOWN THE SAME PATH THAT WE HAVE INHERITED. THE SURVIVAL OF OUR CHILDREN IS DEPENDENT ON IS CREATING NEW SOLUTIONS.

OUR ROLE, AS THE NEXT GENERATION, IS TO RETURN TO A PATH OF BALANCE AND BUILD A LEGACY OF BEAUTY

