

# Pinal Creek Riparian Area



Chris Jones

University of Arizona Cooperative Extension

Gila County



COLLEGE OF  
AGRICULTURE  
& LIFE SCIENCES  
COOPERATIVE EXTENSION  
Gila County  
Master Gardener Program

Original slide content by:  
Kelly Mott-Lacroix, USFS



# Fremont Cottonwood



©Al Schneider. [Southwest Colorado Wildflowers](#). United States, CO, NM, AZ, UT, Four Corners vicinity, within 150 miles of the corners. [Usage Requirements](#). Any use of copyrighted images requires permission of the copyright holder.

© Al Schneider



Kretyen of Flickr - [Flickr](#)  
Wikimedia Commons

# Arizona Sycamore



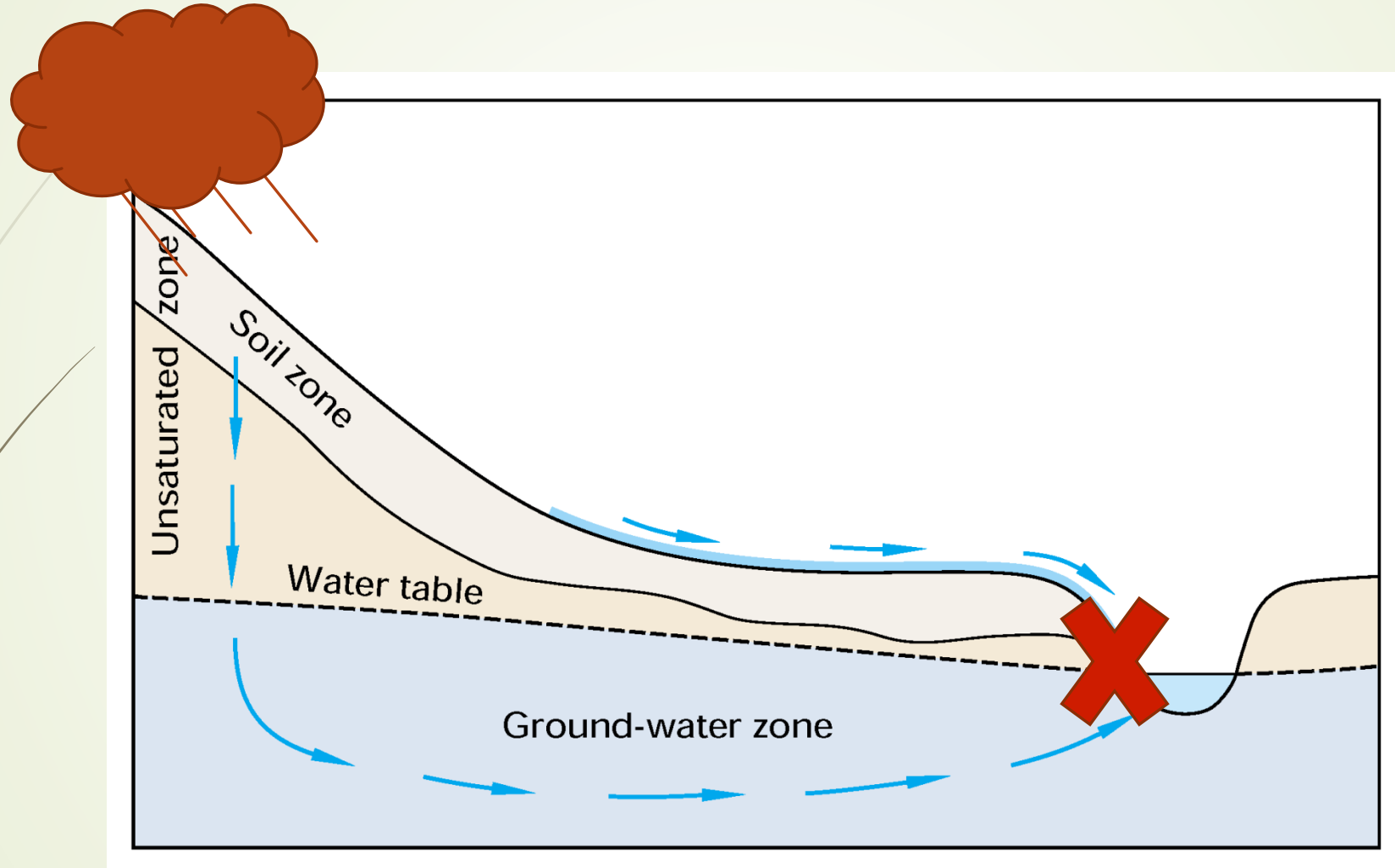
# Words...

3

- Riparian Ecosystem
- Obligate riparian species
- Facultative riparian species

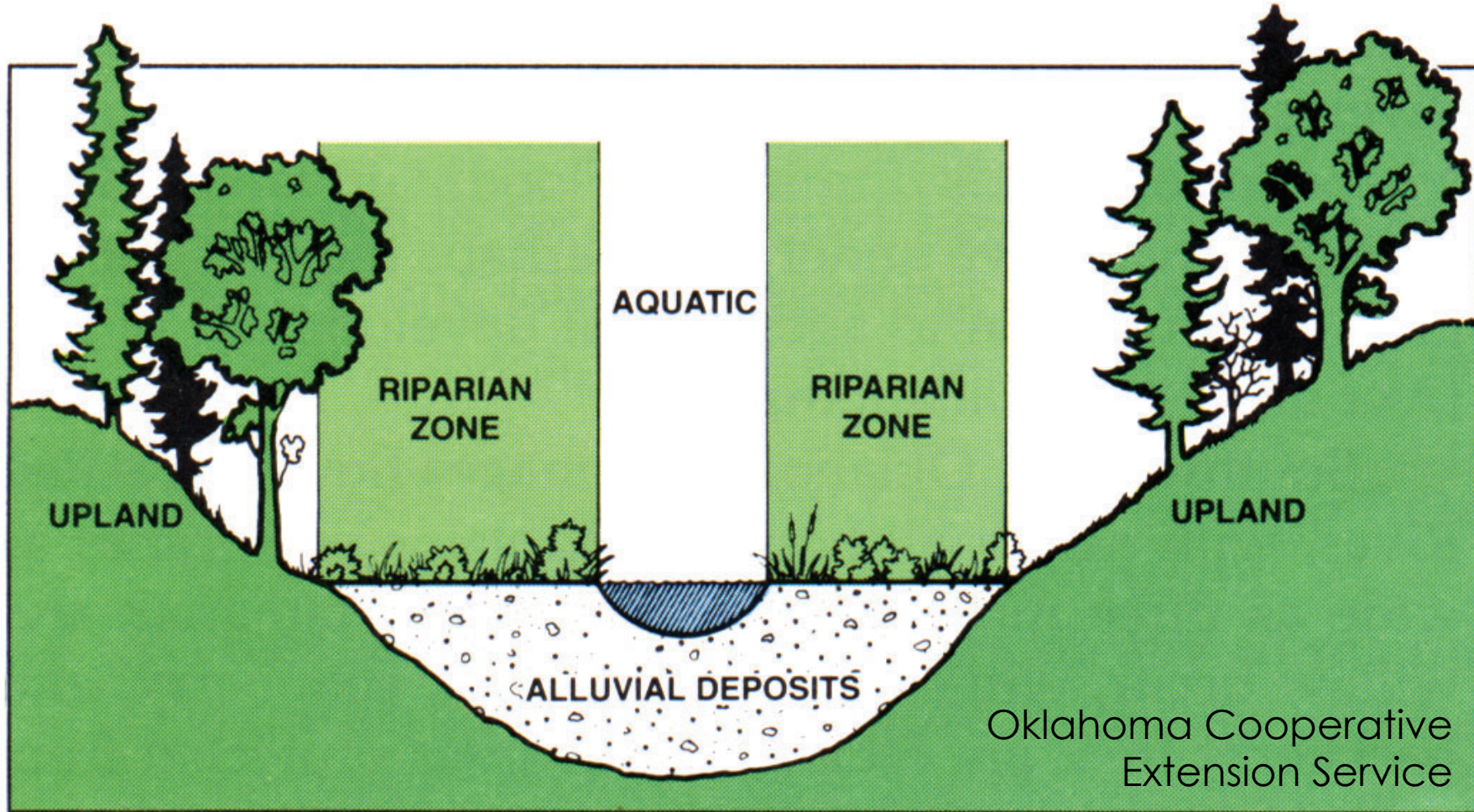


# Some basics... Watersheds



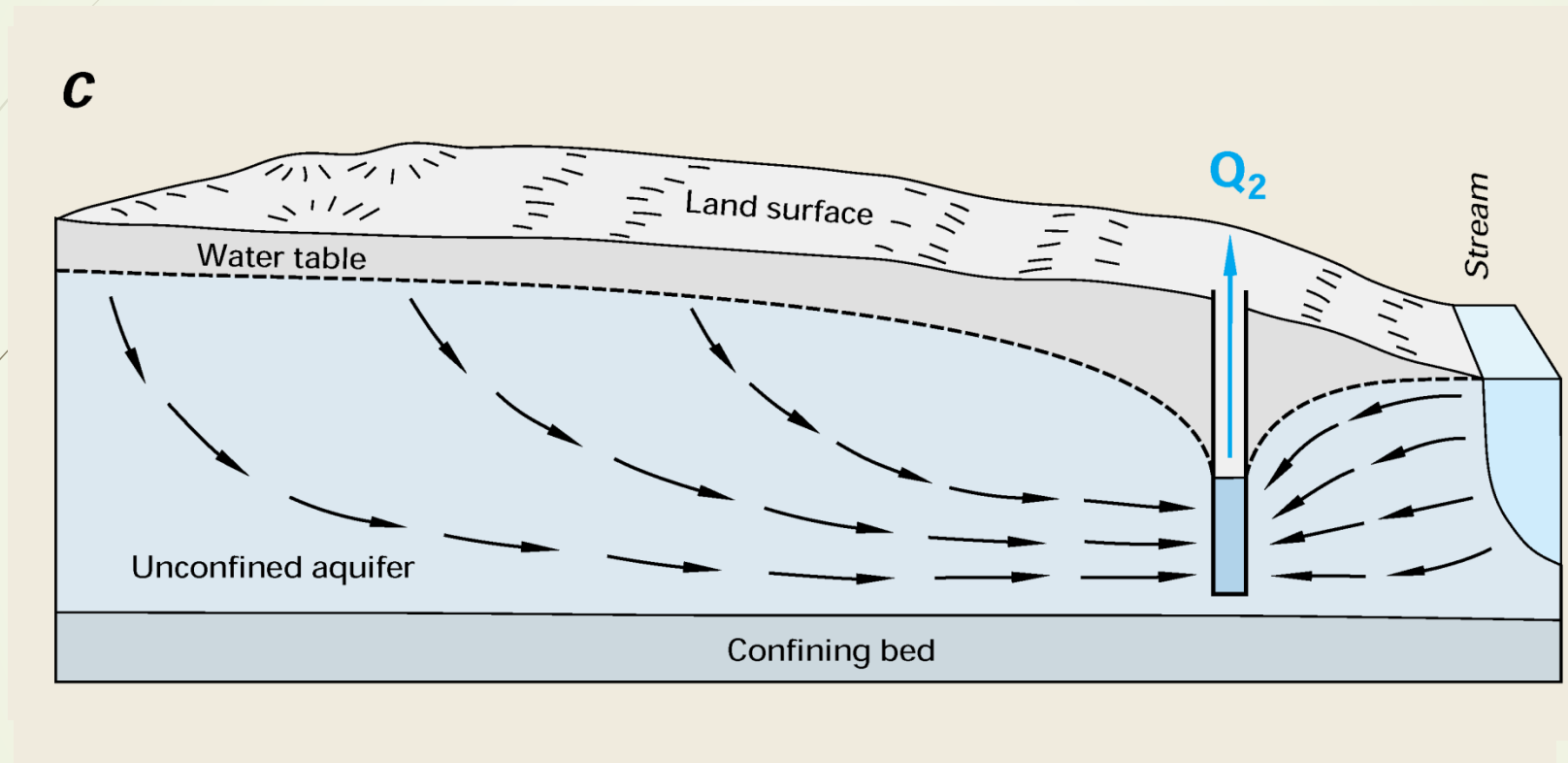


# Some basics: Riparian Areas






# Some basics.... Water Use







What Does  
“*Water for Riparian  
Ecosystem Needs*”  
Mean?

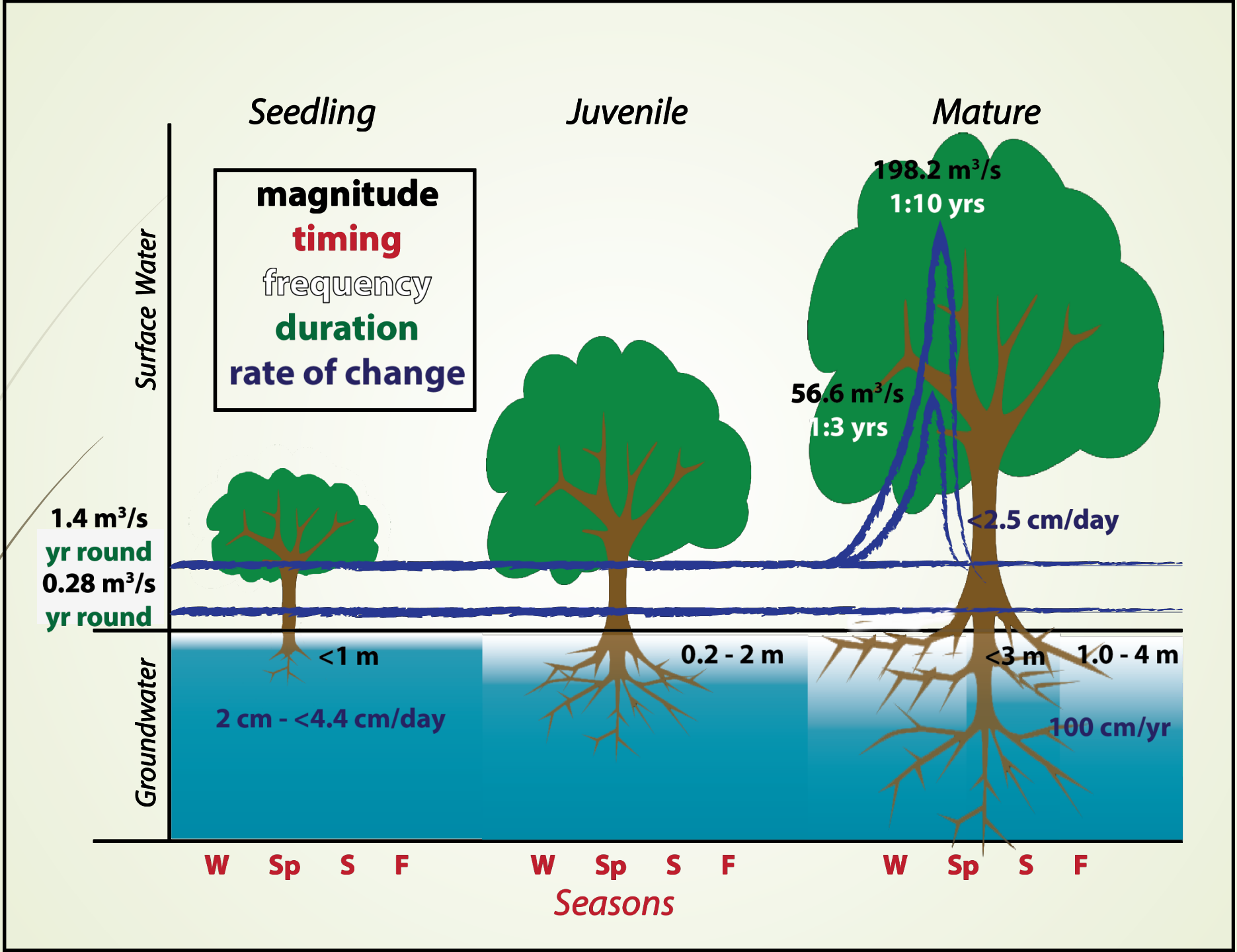


# Water for Ecosystem Needs

The amount of water needed in a watercourse to sustain a healthy ecosystem

- Magnitude (how much)
- Frequency (how often)
- Duration (how long)
- Timing (how predictable)
- Rate of Change (how variable)
- Includes priority setting by the community as well



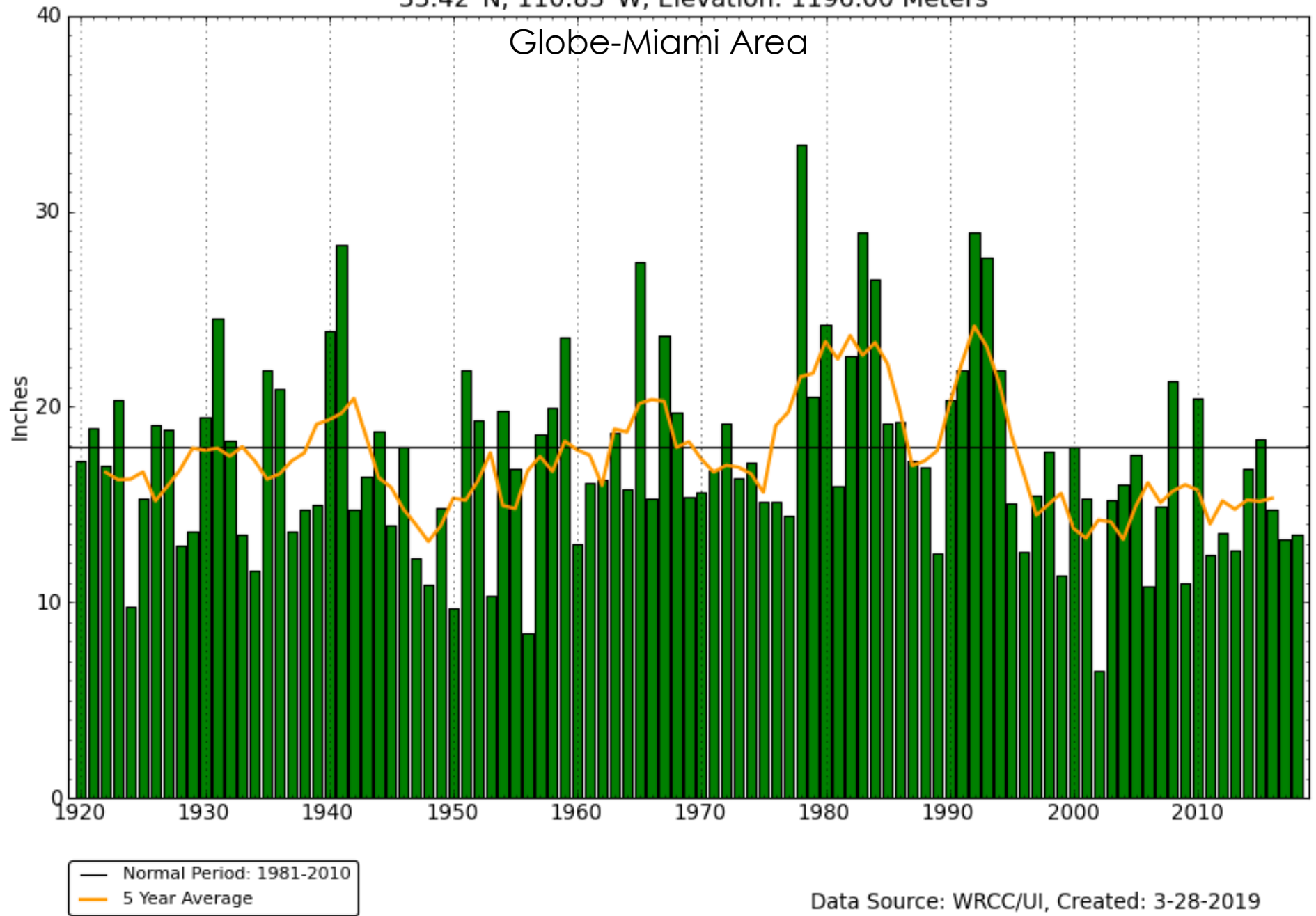


How do we make  
sure our riparian  
area trees get the  
water they need?



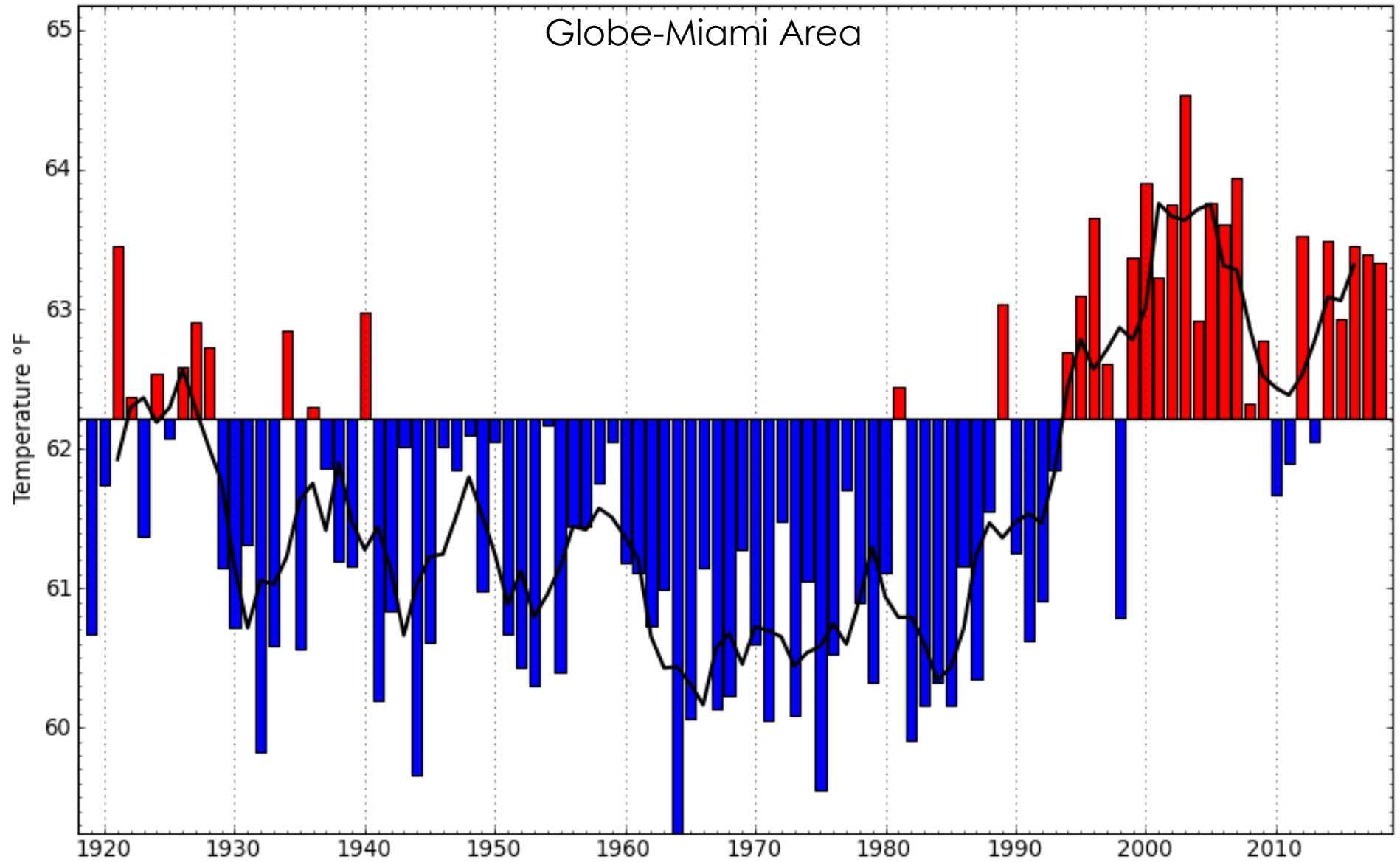


Precipitation, 12-Months Ending in December  
33.42°N, 110.83°W, Elevation: 1196.00 Meters



Data Source: WRCC/UI, Created: 3-28-2019

Mean Temperature, 12-Months Ending in December  
33.42°N, 110.83°W, Elevation: 1196.00 Meters



Data Source: WRCC/UI, Created: 3-28-2019