

Anthony Aceves | Holly Barton | Jhentille Cargill | Chase Cushing | Emma James | Monica Landgrave-Serrano

Planning Process



Site Visits

Stakeholder Meetings | Conversations with Community Members



Image Credit: Arlie Adkins

What is the 5-4-3 Framework?

5 Principles

4 Recommendations

3 Sites

5 Principles: CHEER



Community Engagement



Healthy Community



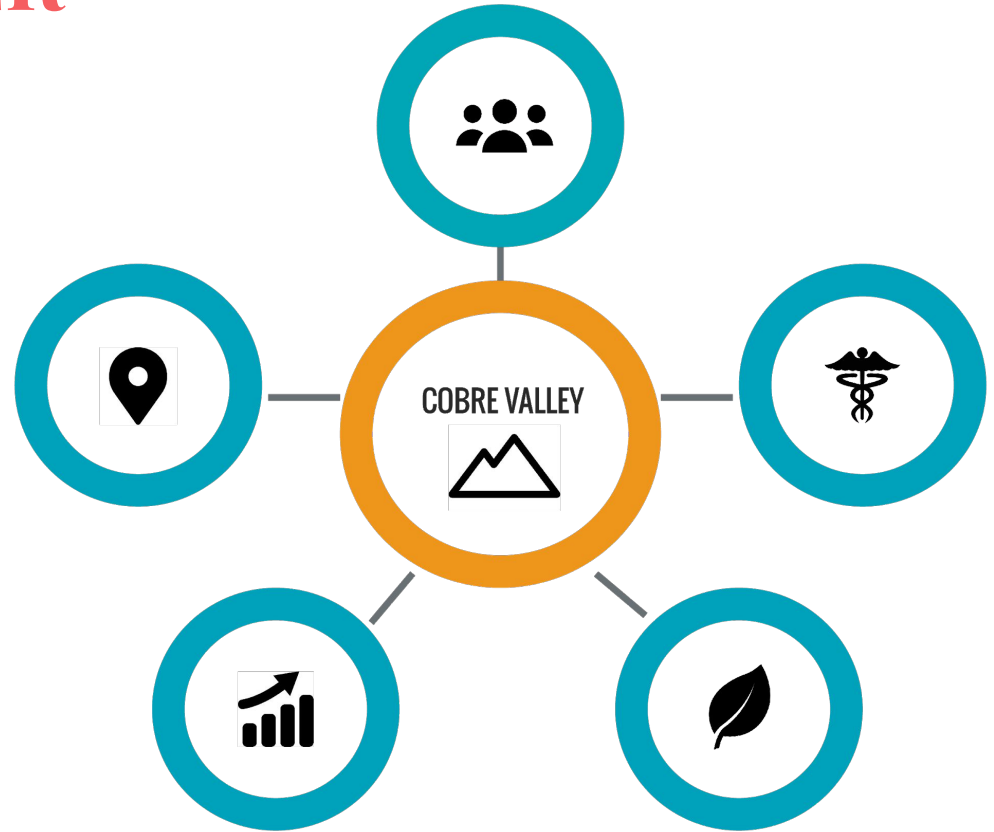
Environmental Stewardship



Economic Growth



Regional Connectivity



4 Recommendations

Trails & Walkability



Image Credit: City of Globe, AZ

Events & Activation



Image Credit: AZCentral.com

Infill Development



Image Credit: Town Planning & Urban Design Collaborative

Signage & Identity

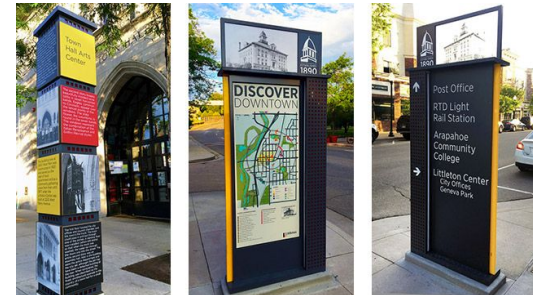


Image Credit: City of Littleton, CO

Gateway to Miami

GATEWAY TO MIAMI, AZ

- 1) Trails & Walkability
 - a) Traffic calming measures
- 2) Events & Activation
 - a) Community events: food truck gatherings, walking tours
- 3) Infill Development
 - a) Opportunity Zones
 - b) Temporary use of vacant buildings
- 4) Signage & Identity
 - a) Wayfinding maps and signs

Existing community efforts:

- The Miami Riverwalk
- Habitat for Humanity Housing



SPECIFIC PROPOSAL SITE

COMMERCIAL CORRIDOR AND DOWNTOWN

500 FT



Gateway to Miami

1) Trails & Walkability

- a) Traffic calming measures

2) Events & Activation

- a) Community events: food truck gatherings, walking tours

3) Infill Development

- a) Opportunity Zones
- b) Temporary use of vacant buildings

4) Signage & Identity

- a) Wayfinding maps and signs

Existing community efforts:

- The Miami Riverwalk
- Habitat for Humanity Housing



Image Credit: AZCentral.com



Image Credit: Northhamptonma.gov

Gateway to Miami

- 1) Trails & Walkability
 - a) Traffic calming measures
- 2) Events & Activation
 - a) Community events: food truck gatherings, walking tours
- 3) Infill Development
 - a) Opportunity Zones
 - b) Temporary use of vacant buildings
- 4) Signage & Identity
 - a) Wayfinding maps and signs

Existing community efforts:

- The Miami Riverwalk
- Habitat for Humanity Housing



Image Credit: Yelp.com

Gateway to Miami

- 1) Trails & Walkability
 - a) Traffic calming measures
- 2) Events & Activation
 - a) Community events: food truck gatherings, walking tours
- 3) Infill Development
 - a) Opportunity Zones
 - b) Temporary use and redevelopment of vacant buildings
- 4) Signage & Identity
 - a) Wayfinding maps and signs

Existing community efforts:

- The Miami Riverwalk
- **Habitat for Humanity Housing**

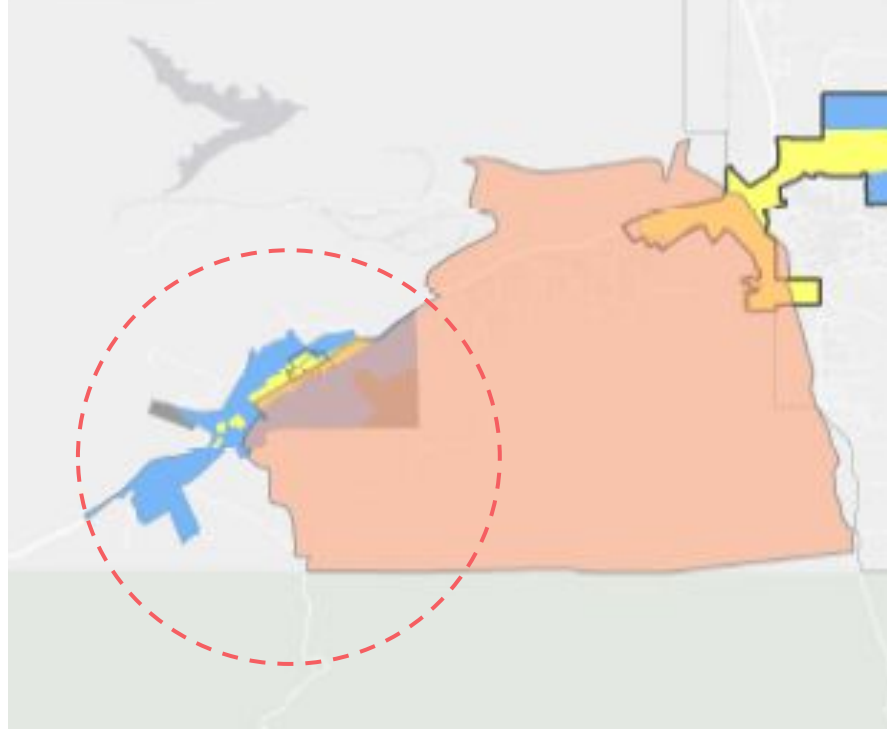


Photo Courtesy of Our Group

Miami: Opportunity Zone

1. Established in 2017 by the Tax Cuts and Jobs Act
2. Census Tracts officially designated in 2018
3. Opportunity Zones can't be adjusted for 10 years, and only by the Governor and US Treasury
4. Recommendation to further research redesignation

Source: AZ Commerce



Gateway to Miami

- 1) Trails & Walkability
 - a) Traffic calming measures
- 2) Events & Activation
 - a) Community events: food truck gatherings, walking tours
- 3) Infill Development
 - a) Opportunity Zones
 - b) Temporary use of vacant buildings
- 4) Signage & Identity
 - a) Wayfinding maps and signs

Existing community efforts:

- The Miami Riverwalk
- Habitat for Humanity Housing



Image Credit: City of Meridian, Idaho

Links to Downtown Globe

- 1) Trails & Walkability
 - a) Muleshoe Pass Extension to Globe
 - b) Implementation process for the Pinal Creek Trail Demonstration Loop
- 2) Events & Activation
 - a) Outdoor markets, music, & festivals at Old Dominion and baseball field
 - b) Regional ecotourism events
- 3) Infill Development
 - a) Land banking
 - b) Opportunity zones
- 4) Signage & Identity
 - a) Wayfinding signs leading to path
 - b) Placards with historical & wildlife information

LINKS TO DOWNTOWN GLOBE, AZ



— SPECIFIC PROPOSAL SITE

— COMMERCIAL CORRIDOR AND DOWNTOWN

1000 FT



Links to Downtown Globe

1) Trails & Walkability

- a) Muleshoe Pass Extension to Globe
- b) Implementation Plan for the Pinal Creek Trail Demonstration Loop

2) Events & Activation

- a) Outdoor markets, music, & festivals at Old Dominion and baseball field
- b) Regional ecotourism events

3) Infill Development

- a) Land banking
- b) Opportunity zones

4) Signage & Identity

- a) Wayfinding signs leading to path
- b) Placards with historical & wildlife information



Trail to Downtown globe

500 FT



Links to Downtown Globe

- 1) Trails & Walkability
 - a) Muleshoe Pass Extension to Globe
 - b) Implementation process for the Pinal Creek Trail Demonstration Loop
- 2) Events & Activation
 - a) Outdoor markets, music, & festivals at Old Dominion and baseball field
 - b) Regional ecotourism events
- 3) Infill Development
 - a) Land banking
 - b) Opportunity zones
- 4) Signage & Identity
 - a) Wayfinding signs leading to path
 - b) Placards with historical & wildlife information



Image Credit: Heirloomfm.org

Links to Downtown Globe

- 1) Trails & Walkability
 - a) Muleshoe Pass Extension to Globe
 - b) Implementation process for the Pinal Creek Trail Demonstration Loop
- 2) Events & Activation
 - a) Outdoor markets, music, & festivals at Old Dominion and baseball field
 - b) Regional ecotourism events
- 3) Infill Development
 - a) Land banking
 - b) Opportunity zones
- 4) Signage & Identity
 - a) Wayfinding signs leading to path
 - b) Placards with historical & wildlife information



Image Credit: KJZZ.org

Links to Downtown Globe

- 1) Trails & Walkability
 - a) Muleshoe Pass Extension to Globe
 - b) Implementation process for the Pinal Creek Trail Demonstration Loop
- 2) Events & Activation
 - a) Outdoor markets, music, & festivals at Old Dominion and baseball field
 - b) Regional ecotourism events
- 3) Infill Development
 - a) Land banking
 - b) Opportunity zones
- 4) Signage & Identity
 - a) Wayfinding signs leading to path
 - b) Placards with historical & wildlife information

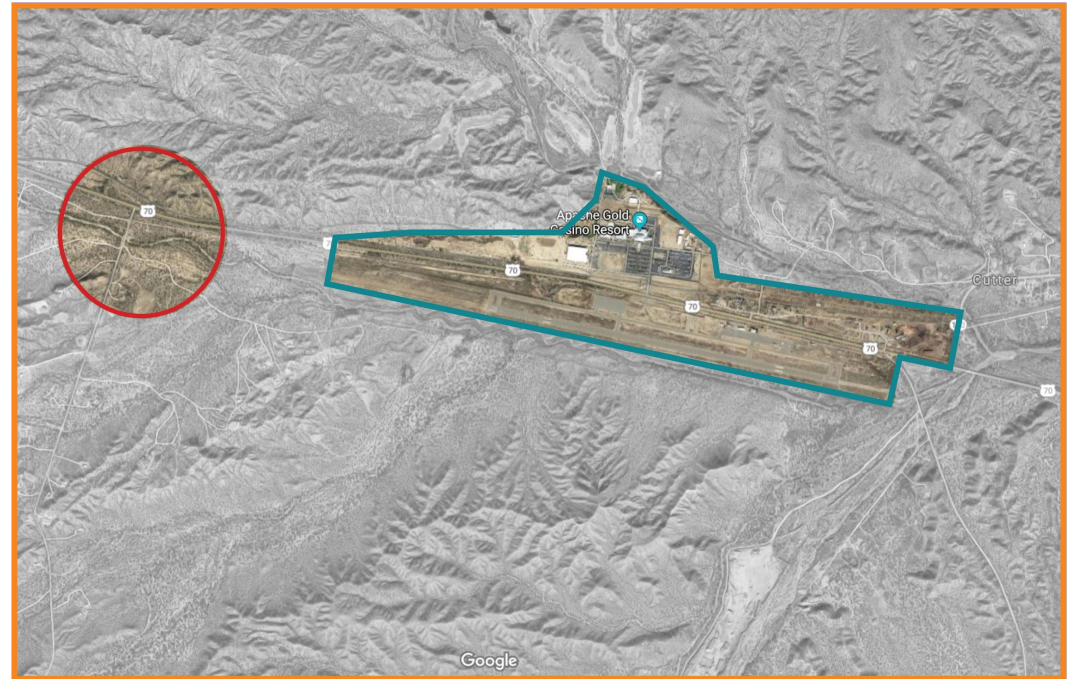


Image Credit: Walkyourcity.org

Mixed Use for San Carlos Apache Tribe

- 1) Trails & Walkability
 - a) Trail development in preserved open space
- 2) Events & Activation
 - a) Have public space dedicated to community events
- 3) Infill Development
 - a) Commercial, office, residential development on site
- 4) Signage & Identity
 - a) Regionally themed signs similar to wayfinding signs in Globe & Miami

SAN CARLOS APACHE RESERVATION, AZ



— SPECIFIC PROPOSAL SITE

— APACHE GOLD CASINO RESORT AND AIRPORT

1000 FT



Mixed Use for San Carlos Apache Tribe

- 1) Trails & Walkability
 - a) Trail development in preserved open space
- 2) Events & Activation
 - a) Have public space dedicated to community events
- 3) Infill Development
 - a) Commercial, office, residential development on site
- 4) Signage & Identity
 - a) Regionally themed signs similar to wayfinding signs in Globe & Miami

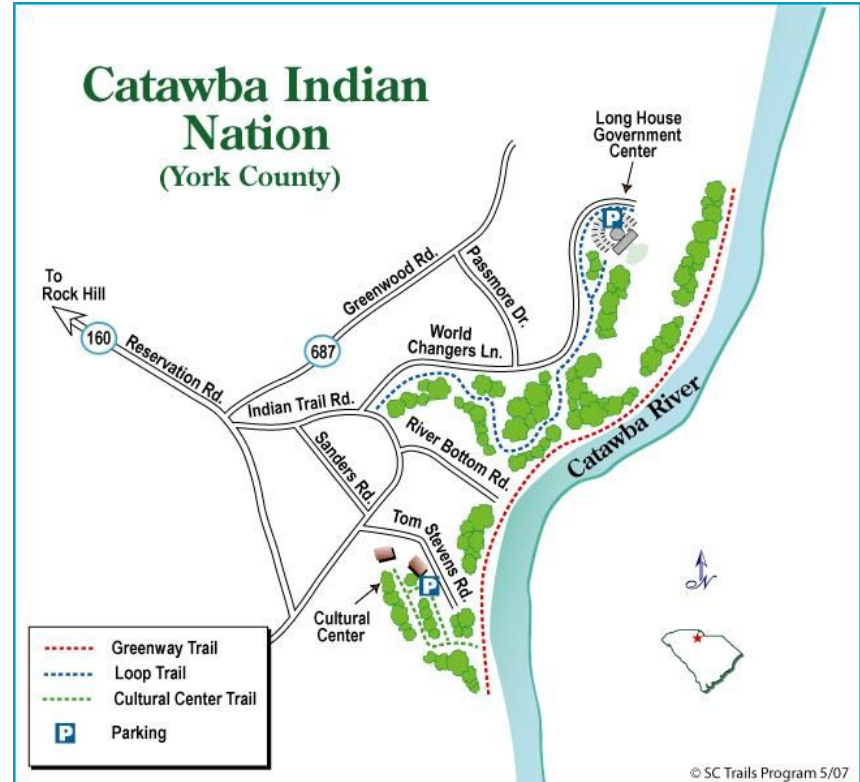


Image Credit: Catawba Indian Nation

Mixed Use for San Carlos Apache Tribe

- 1) Trails & Walkability
 - a) Trail development in preserved open space
- 2) Events & Activation
 - a) Have public space dedicated to community events
- 3) Infill Development
 - a) Commercial, office, residential development on site
- 4) Signage & Identity
 - a) Regionally themed signs similar to wayfinding signs in Globe & Miami



Image Credit: Crazy Crow Trading Post

Mixed Use for San Carlos Apache Tribe

- 1) Trails & Walkability
 - a) Trail development in preserved open space
- 2) Events & Activation
 - a) Have public space dedicated to community events
- 3) Infill Development
 - a) Commercial, office, residential development on site
- 4) Signage & Identity
 - a) Regionally themed signs similar to wayfinding signs in Globe & Miami



Image Credit: Seattle Daily Journal of Commerce

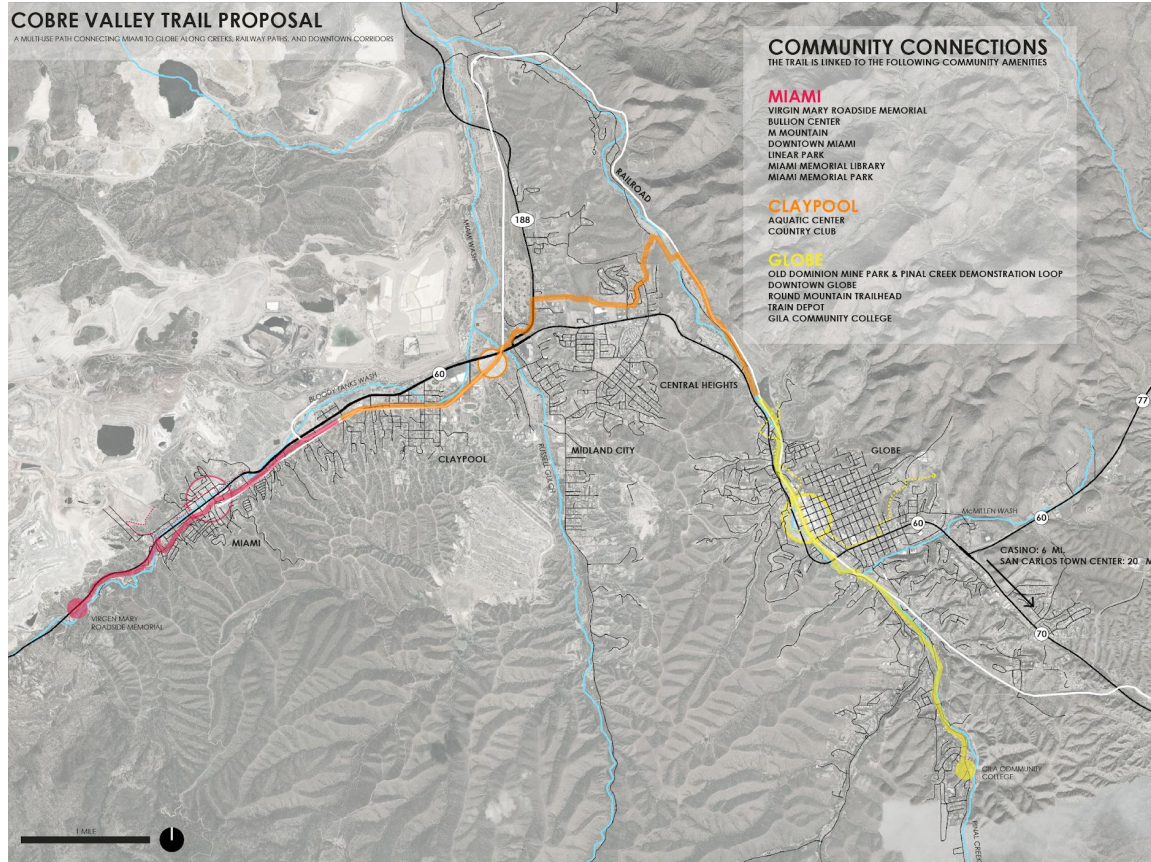
Mixed Use for San Carlos Apache Tribe

- 1) Trails & Walkability
 - a) Trail development in preserved open space
- 2) Events & Activation
 - a) Have public space dedicated to community events
- 3) Infill Development
 - a) Commercial, office, residential development on site
- 4) Signage & Identity
 - a) Regionally themed signs similar to wayfinding signs in Globe & Miami



Image Credit: Durango Herald

Bringing it all together: Cobre Valley Trail Proposal



Rails with Trails



5 Principles: CHEER



Community Engagement



Healthy Community



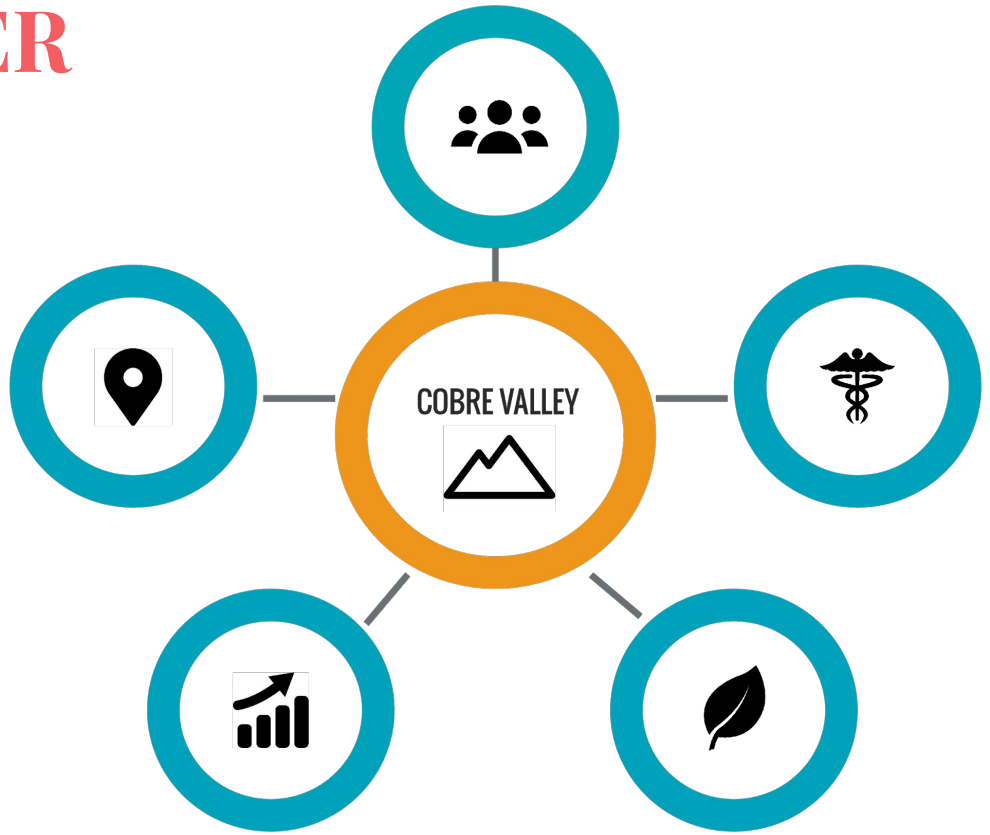
Environmental Stewardship



Economic Growth



Regional Connectivity



Cobre Valley

CHEER

5-4-3 Framework

**Please give us
your feedback by
filling out the
questionnaire.**

Planning Team:

Anthony Aceves

Holly Barton

Jhentille Cargill

Chase Cushing

Emma James

Monica Landgrave

Landscape Architecture Team:

Isaac Palomo

Sydney Truly

Mario Nuno-Whelan

Penelope Cottrell-Crawford

Rebecca Johnstone

Dionna Hatch