

Riparian Preservation and Restoration Listening Session

Santa Cruz River Basin
Restoration Sites

Brittany Choate
Research Assistant, Water
Resources Research Center
July 29, 2011 WRRC Brown Bag

Presentation Contents

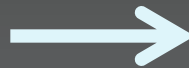
- Overview of restoration sites located in the **Santa Cruz River Basin**
 - > Planned, in-progress, and complete
- Identify water needs of these sites
 - > How may **Conserve to Enhance** (C2E) help?

C2E Process

Water saved through
water conservation



Watershed Management Group



Water delivered to river
enhancement sites

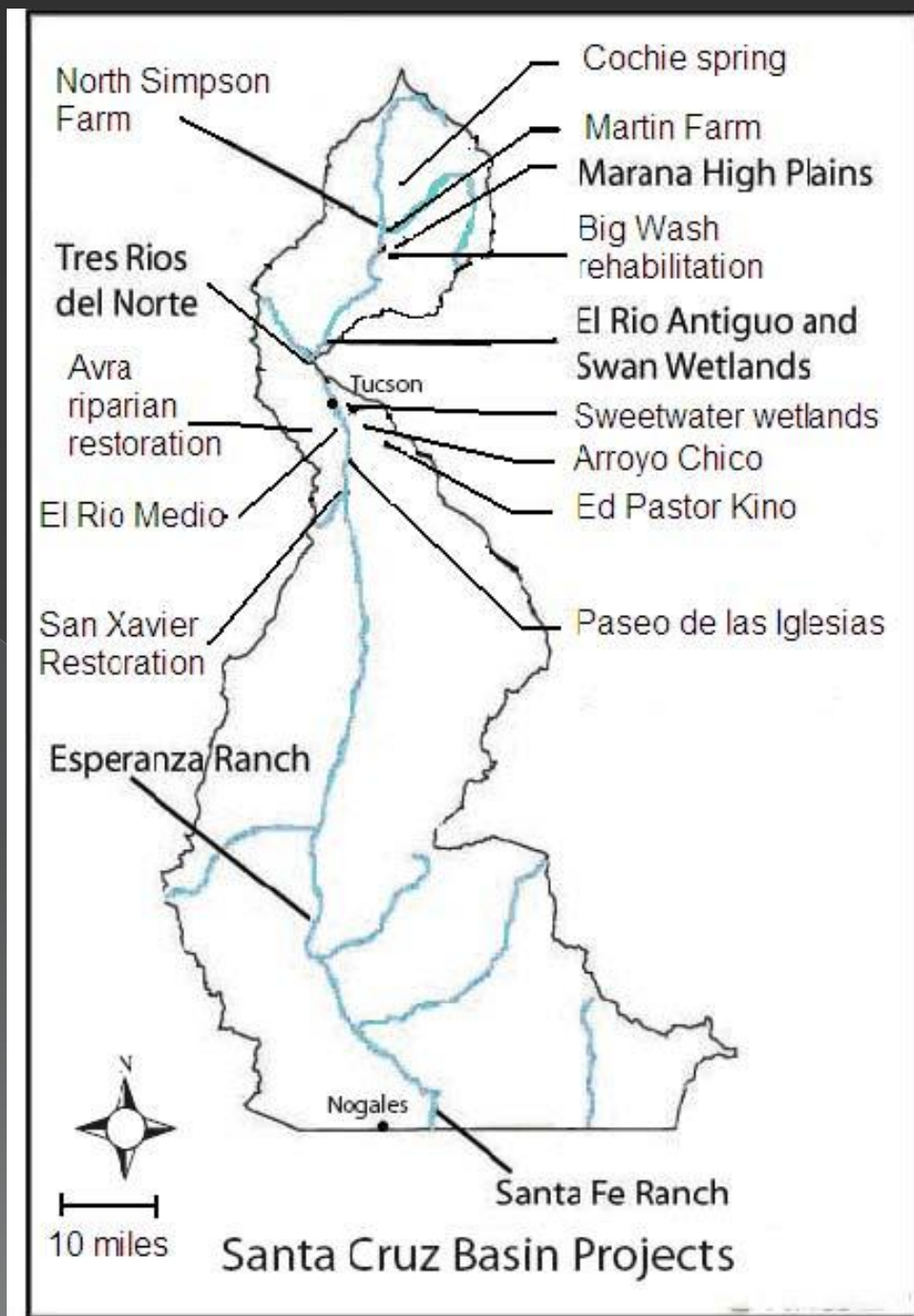


Watershed Management Group

Presentation Resources

- “Riparian Restoration Efforts in the Santa Cruz River Basin”
 - > 2009 Report by Julie Fabre, Claire Cayla
- “Projects to Enhance Arizona's Environment”
 - > 2006 Report by Sharon Megdal, Kelly Mott Lacroix, Andrew Schwarz

Santa Cruz River Basin Site Locations



**Sites, according to
Restoration Report,
that *may* need
water**

Arroyo Chico

**Avra Riparian Restoration and
Groundwater Replenishment Project**

Cochie Spring

El Rio Antiguo

El Rio Medio

Esperanza Ranch

**Marana High Plains Effluent Recharge
Project**

Martin Farm

North Simpson Site

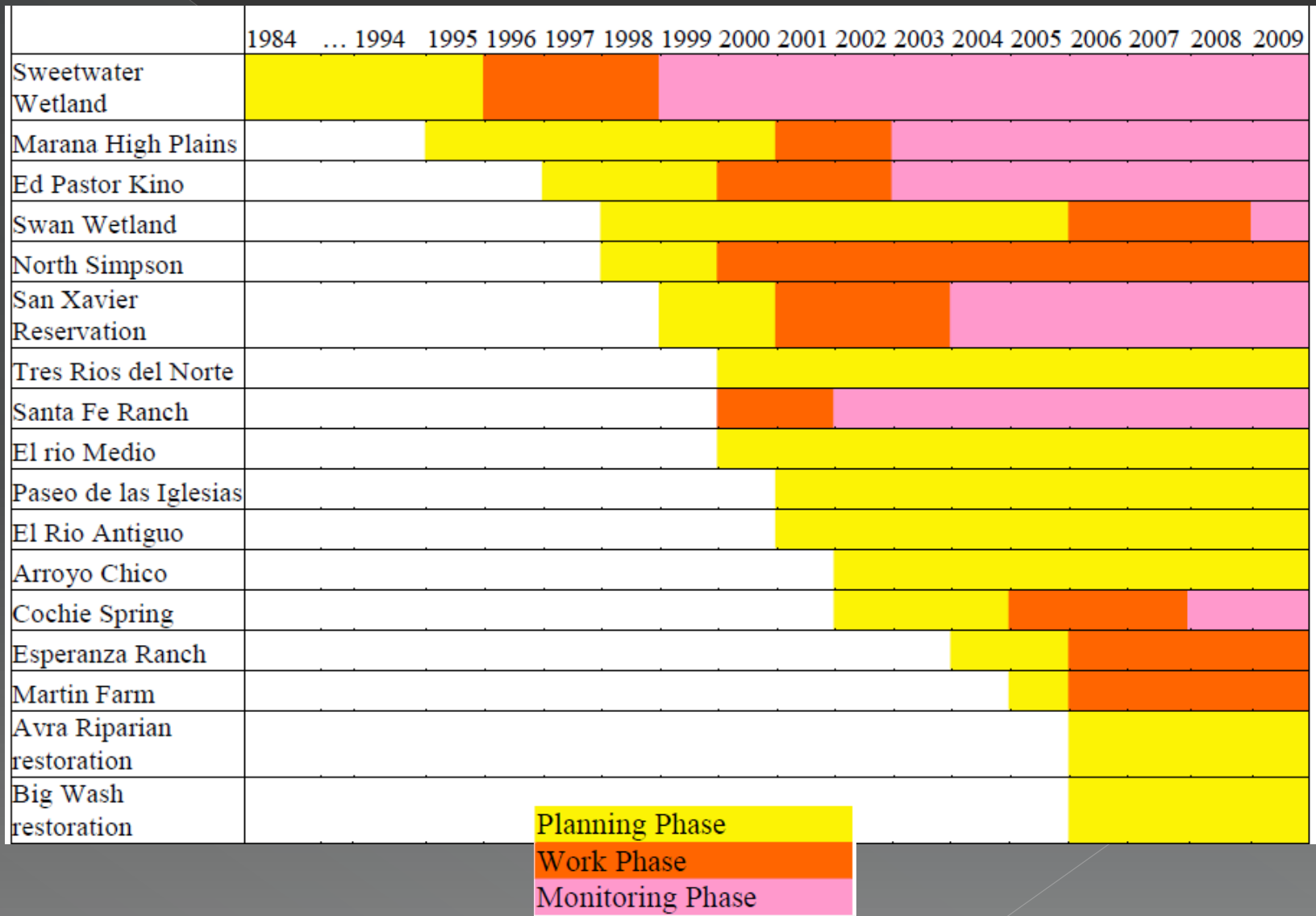
Paseo de las Iglesias

**San Xavier Indian Reservation Riparian
Restoration**

Santa Fe Ranch Restoration Area

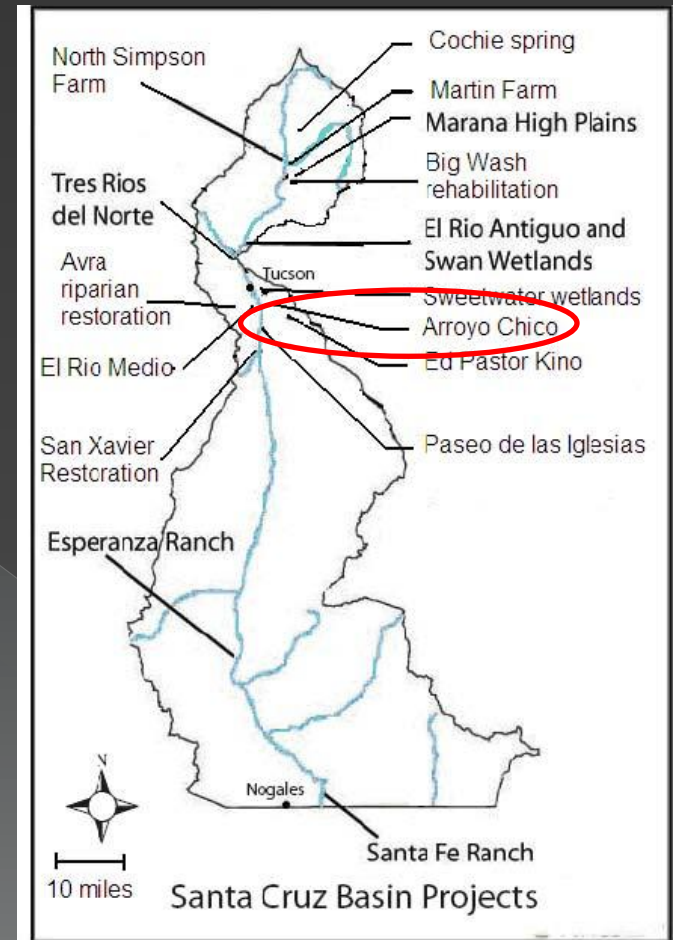
The Big Wash Rehabilitation Project

Project Phases, as of 2009

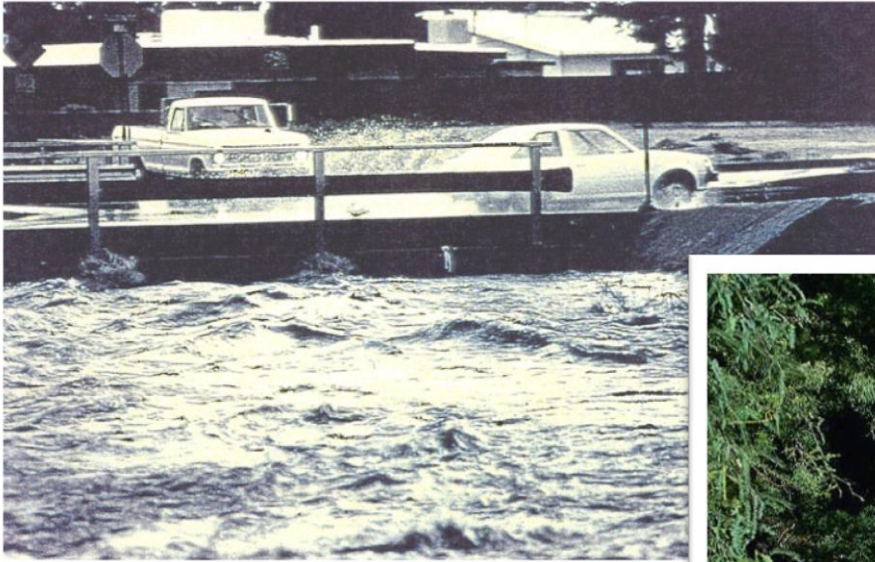


Arroyo Chico

- Phase
 - > In progress, nearing completion
- Project Goal/Driver
 - > Multi purpose flood control facility for riparian enhancement
 - > Reduce flood damage for properties along Arroyo Chico
- Water Source
 - > **Plan to purchase from Tucson Water**



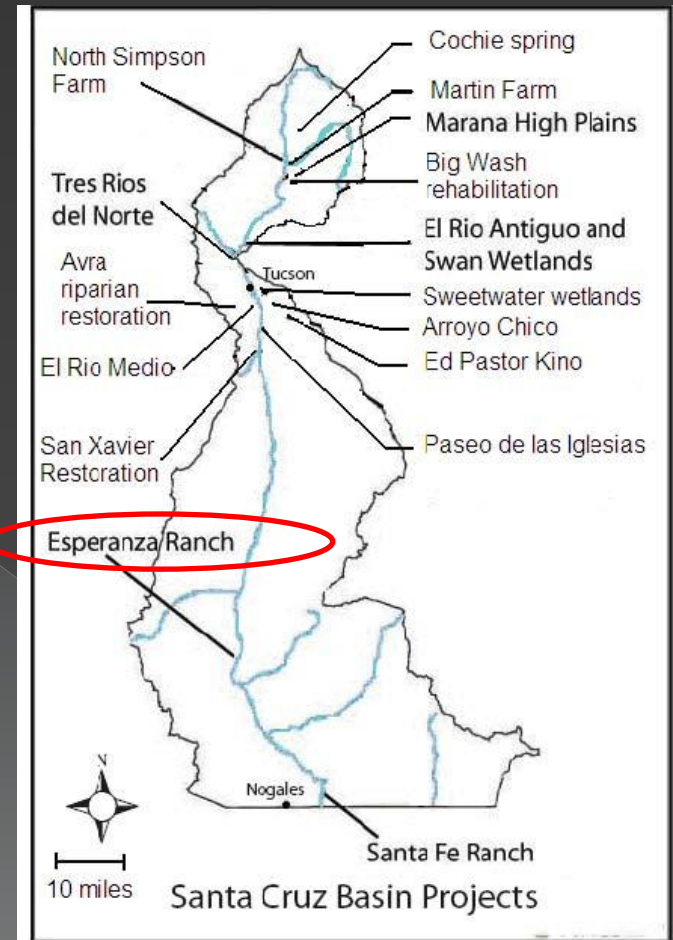
Arroyo Chico



Photos from PCFCD
(<http://rfcd.pima.gov/projects/arroyochico/compilation.htm>)

Esperanza Ranch

- Phase
 - > Restoration in progress
- Project Goal/Driver
 - > Effluent flow for riparian enhancement
 - > Stabilize erosion prone areas
 - > Engage the community
- Water Source
 - > Relies on **intermittent effluent flow** from Nogales International WWTP, no contract



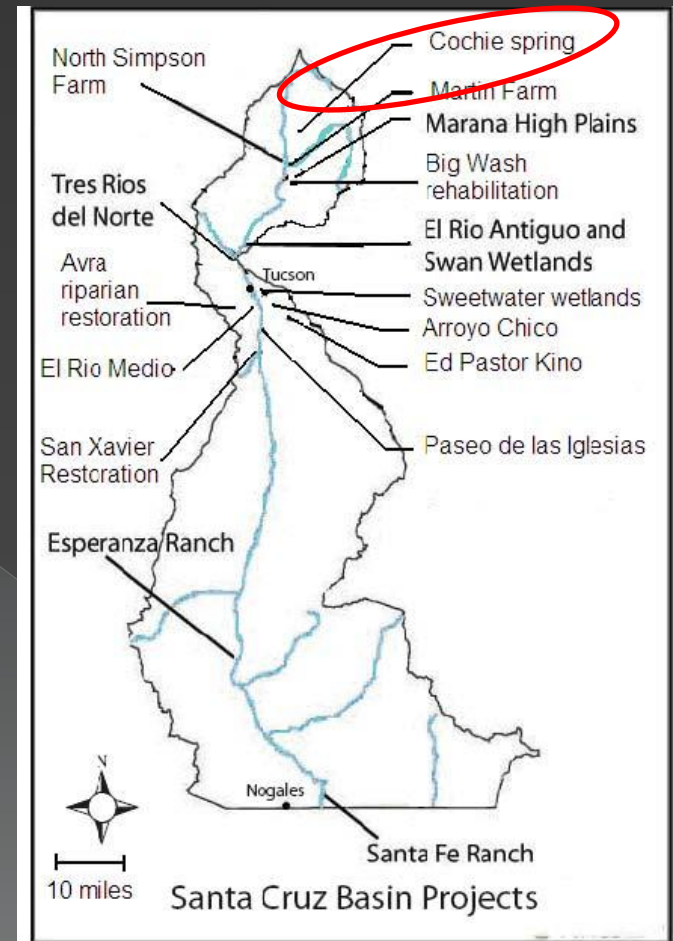
Esperanza Ranch



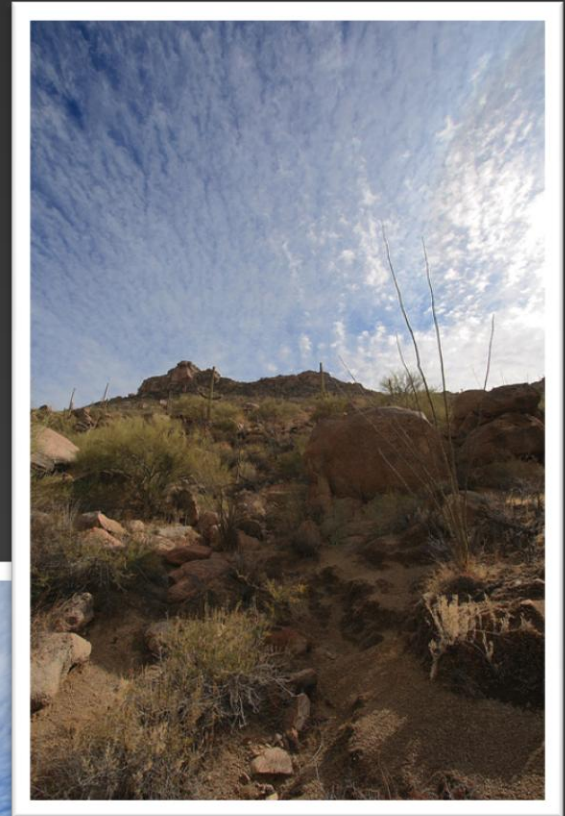
Photos from Mr. Kroesen, December 2008

Cochie Spring

- Phase
 - Monitoring and maintenance
- Project Goal/Driver
 - Habitat restoration and enhancement of historic homestead in Pima County
- Water Source
 - **Relies on storm water**



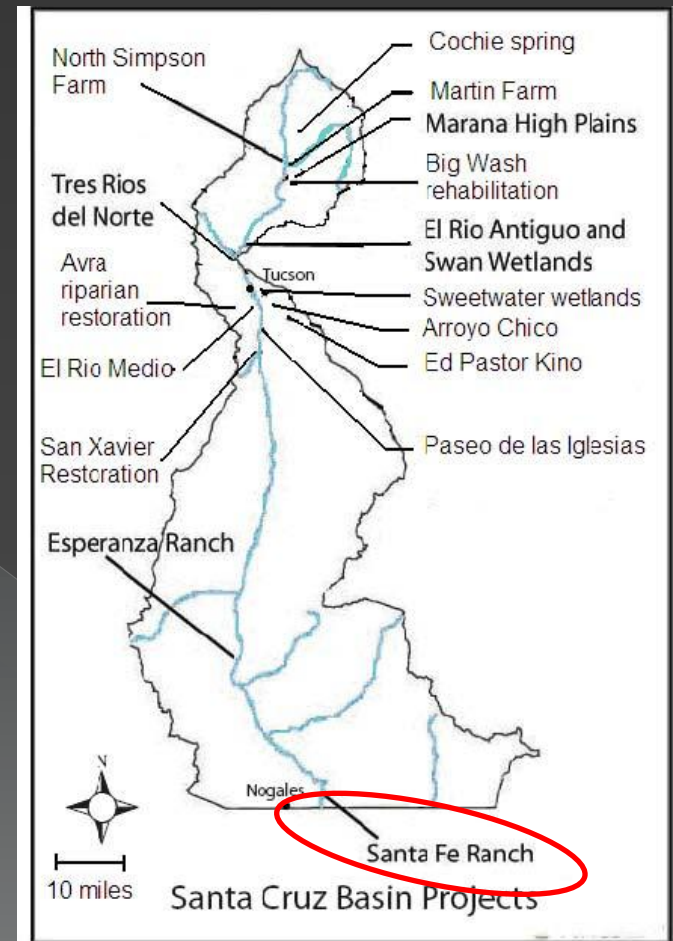
Cochie Spring



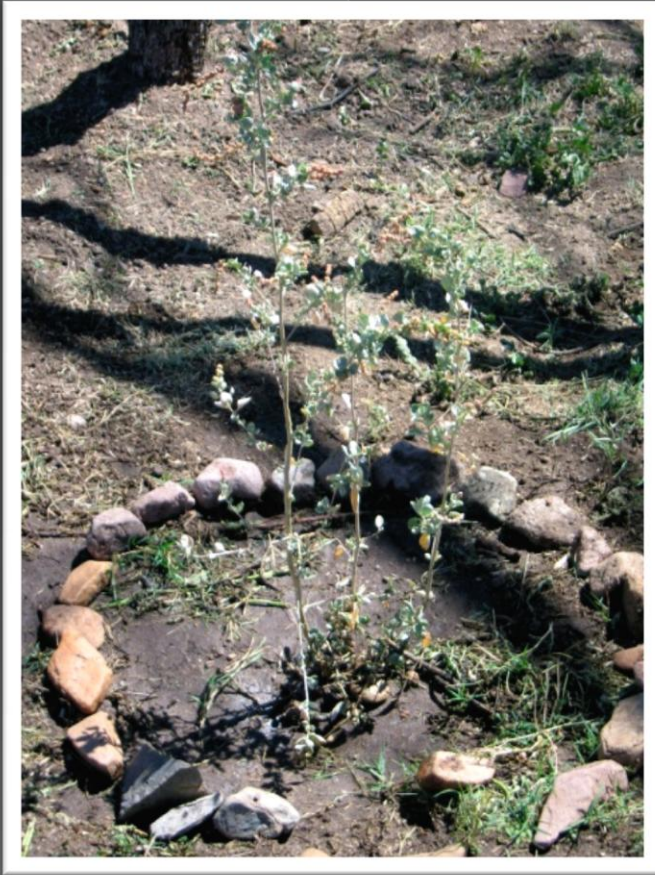
Photos from HikeArizona.com (<http://hikearizona.com/photoset.php?ID=9479>)
and Tucson Audubon Society website.

Santa Fe Ranch Restoration Area

- Phase
 - > Monitoring and outreach
- Project Goal/Driver
 - > Erosion control
 - > Riparian restoration
 - > Revegetate the area
 - > Increase public awareness of riparian system and values
- Water Source
 - > Irrigated by a well that is currently being used to irrigate pasture, **WT lowering**



Santa Fe Ranch Restoration Area



Images from the Santa Fe Ranch Restoration Area website
(<http://santaferanchfoundation.org>)

Thank you!

Brittany Choate

Research Assistant

Water Resources Research Center

The University of Arizona

Email: bchoate@email.arizona.edu

Phone: (520) 621-3826

Thank you!

References

- “Riparian Restoration Efforts in the Santa Cruz River Basin”

- > 2009 Report by Julie Fabre, Claire Cayla

- http://ag.arizona.edu/azwater/publications.php?page_num=2&limit=10&type=

- “Projects to Enhance Arizona's Environment”

- > 2006 Report by Sharon Megdal, Kelly Mott Lacroix, Andrew Schwarz

- http://ag.arizona.edu/azwater/publications.php?page_num=4&limit=10&type=