

[To view this email as a web page, go here.](#)

THE UNIVERSITY OF ARIZONA



**WATER RESOURCES
RESEARCH CENTER**

WEEKLY WAVE

IN THIS ISSUE: Groundwater, Photo Contest, Women in Water, Factsheet

March 14, 2025 / Volume 13, Issue 10

The [WRRC](#) is a research unit of the [College of Agriculture, Life and Environmental Sciences](#) and an Extension unit in [Cooperative Extension](#).

[JUMP TO EVENTS](#)

[DONATE](#)

[SUBSCRIBE](#)



News

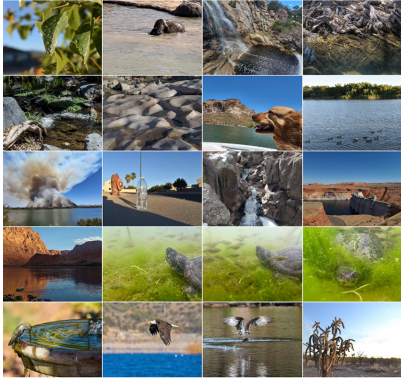


**NATIONAL
GROUNDWATER
AWARENESS WEEK**
March 9-15, 2025

WRRC Recognizes National Groundwater Awareness Week

The National Ground Water Association's (NGWA) annual observance of Groundwater Awareness Week is March 9–15, 2025, and is an occasion in which to remember a major but hidden water resource. The NGWA and its partners initiated National Groundwater Awareness Week in 1999 to “to highlight the responsible development, management, and use of groundwater” and for communities to highlight local water issues.

[READ MORE](#)



All WRRC 2024 Photo Contest Submissions Now Online!

On February 13, 2025, we announced the winners of the WRRC's 2024 Photo Contest at our annual Chocolate Fest. We are now excited to share that all the contest submissions are available for viewing on our website.

[Read More](#)



Women in Water Diplomacy Network Introduces Global Leadership Council

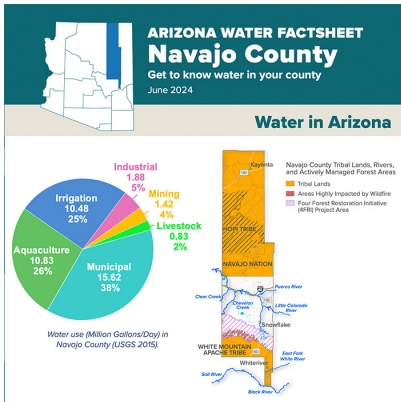
This year, International Women's Day was officially held on March 8, and called for the effort to "Accelerate Action," a campaign which emphasizes the importance of taking swift and decisive steps to achieve gender equality. On Wednesday, March 12, 2025, the Women in Water Diplomacy Network (WWDN) celebrated [International Women's Day](#) by hosting a panel discussion, titled *A Path Forward for Women, Water, Peace and Security – Elevating Central Asian voices from across the Women in Water Diplomacy Network*.

[Read More](#)

Arizona Water Factsheets ... Did You Know?

Navajo County Depends on Groundwater

Navajo County, located in northeastern Arizona between Coconino and Apache counties, comprises two distinct geographic regions: arid and desert-like mesas, plateaus, and buttes in the north and mountainous piñon-juniper and ponderosa pine woodlands in the south. About 54%



of Navajo County residents live in rural areas that depend on domestic groundwater wells for water.

[Read More](#)

Events



WRRC Co-Sponsored Event: NVIS Spring 2025 Seminar: Ecosystems Stewardship

Featuring Joseph Brewer, Professor, Environmental & Indigenous Studies, University of Kansas

Date: March 19, 2025

Time: 12:00 pm Arizona Time

Location: Zoom

[More Info](#)



WRRC Water Webinar: Prioritizing Transboundary Aquifers in the Arizona-Sonora Region

Featuring Elia Tapia, Professor, Universidad de Sonora

Date: Friday, March 28

Time: 12:00 pm Arizona Time

Location: [Zoom](#)

[More Info](#)

Upcoming WRRC Events

- APR 11** [WRRC Water Webinar: Advanced Water Purification in Arizona – Save the Date!](#)
- APR 15** WRRC Water Webinar: Charting Paths Forward for the High Plains Aquifer in Kansas – Save the Date!
- MAY 20-21** [WRRC 2025 Annual Conference: Shared Borders, Shared Waters: Working Together in Times of Scarcity](#)

WRRC Co-sponsored Events

- Apr 16** [WRRC Co-Sponsored Event: NVIS Spring 2025 Seminar: ROOT-STEM: Grounding STEM in Place, Culture, and Community – Jason Bruce](#)
- Apr 30** [WRRC Co-Sponsored Event: NVIS Spring 2025 Seminar: Look to the Mountain: Indigenous Resiliency, Community Leadership, and Partnership Building – Renee Tsinigine](#)

WRRC 2025 Annual Conference

Register Today!

MAY 20–21

Student Union Memorial Center
The University of Arizona
Tucson, AZ

wrrc.arizona.edu/conference

WRRC Water News

- [WRRC Director Sharon B. Megdal Featured in Tumamoc Talk: Arizona’s Framework for Water Regulation and Agricultural Sustainability](#)