

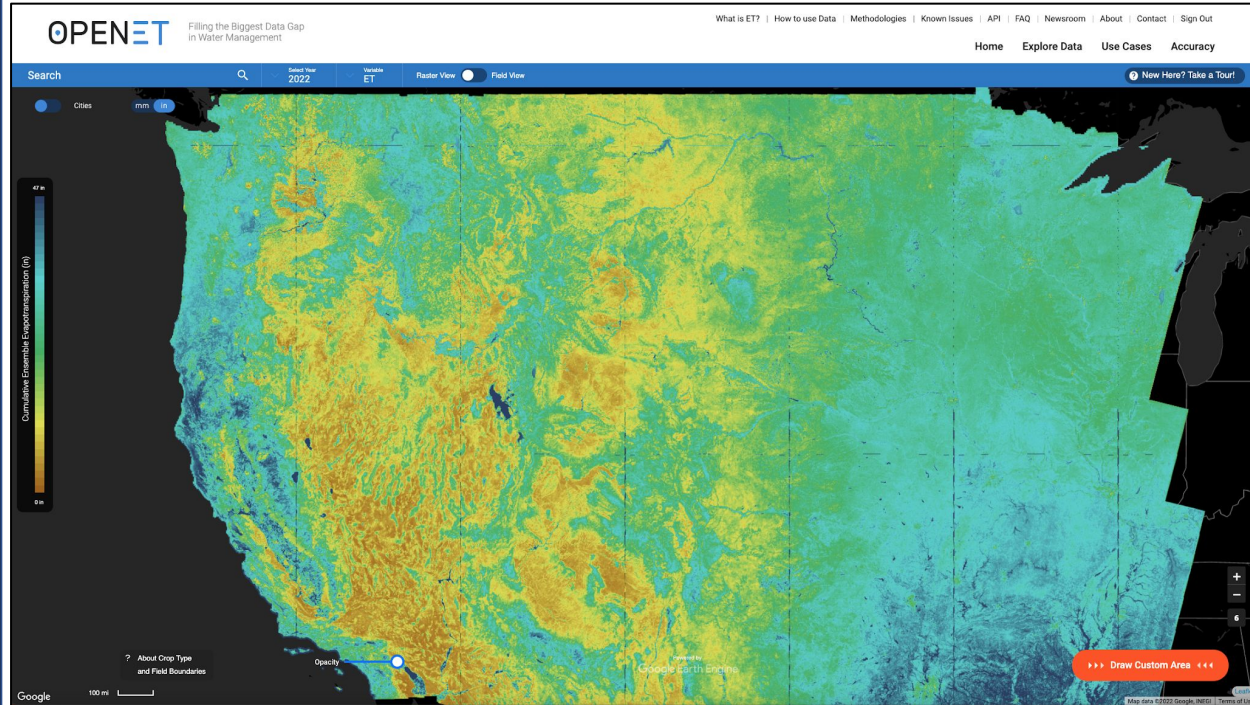


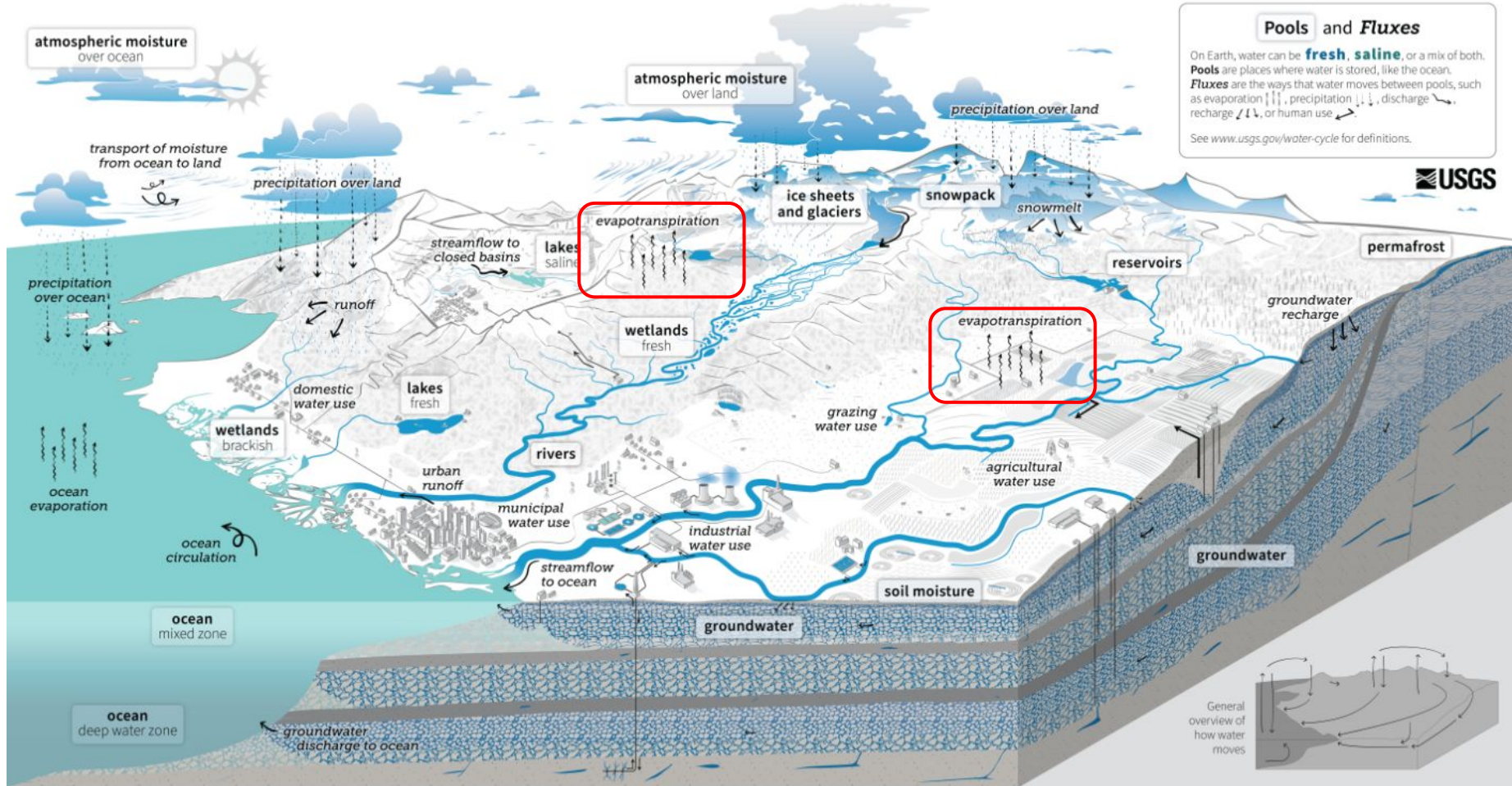
www.openetdata.org

OpenET: Filling a critical data gap for water management

2023 WRRRC Annual Conference
July 7th, 2023

Rachel O'Connor
Environmental Defense Fund
roconnor@edf.org





Pools and Fluxes

On Earth, water can be **fresh, saline**, or a mix of both. **Pools** are places where water is stored, like the ocean. **Fluxes** are the ways that water moves between pools, such as evaporation ↑↑, precipitation ↓↓, discharge ↘, recharge ↙, or human use ↖.

See www.usgs.gov/water-cycle for definitions.



Search



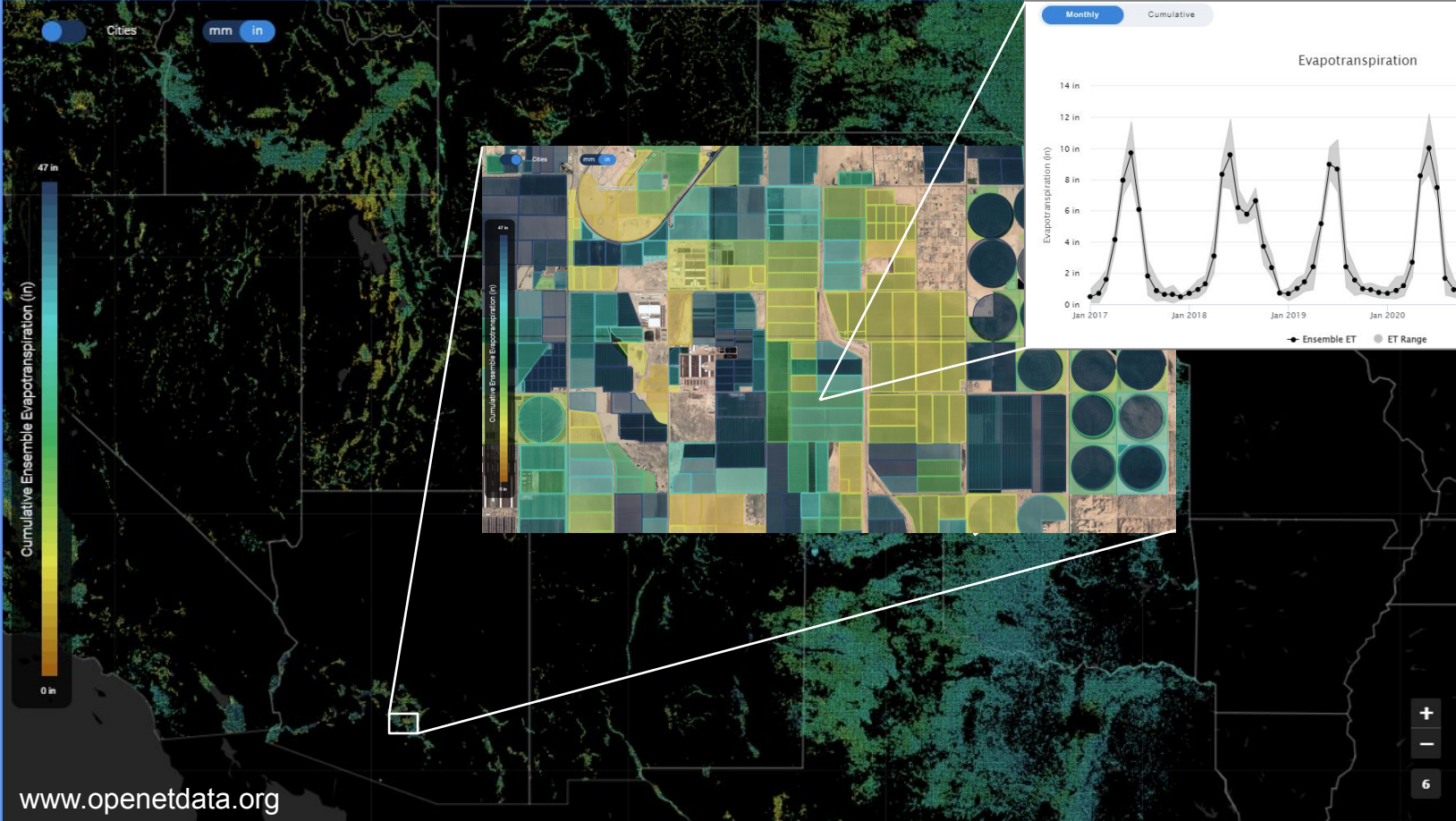
Select Year
2022

Variable
ET

Raster View

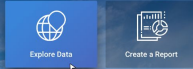
Field View

[New Here? Take a Tour!](#)



OPENET

Lorem ipsum dolor sit amet, consectetur adipiscing elit. Cras laoreet ante et ornare rhoncus. Aenean porta ultrices arcu at accumsan. Sed ante mi, dictum et aliquam lobortis, pulvinar et ornare. Nullam tincidunt lobortis mattis. Vestibulum ante ipsum primis in faucibus.



Search Location

Detect my location

Scroll Down and Learn More

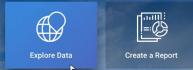


How is OpenET being used?

- Irrigation scheduling across the West
- Groundwater budgets in Oregon
- Evaluating cropping patterns in Colorado
- Drought mitigation in Utah
- Water accounting in Nebraska
- Regulatory compliance in California

OPENET

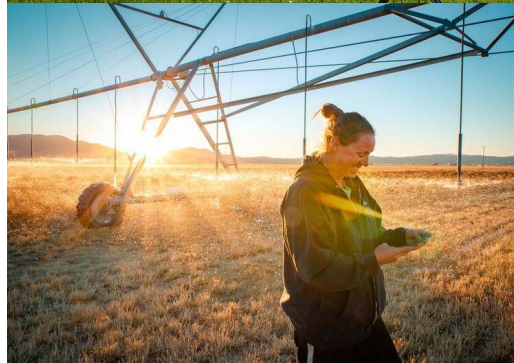
Lorem ipsum dolor sit amet, consectetur adipiscing elit. Cras laoreet ante et ornare rhoncus. Aenean porta ultrices arcu ac accumsan. Sed ante mi, dictum et aliquam lobortis, pulvinar et orci. Nullam tincidunt lobortis mattis. Vestibulum ante ipsum primis in faucibus.



Search Location

Detect my location

Scroll Down and Learn More



How is OpenET being used?

- Irrigation scheduling across the West
- Groundwater budgets in Oregon
- Evaluating cropping patterns in Colorado
- Drought mitigation in Utah
- Water accounting in Nebraska
- Regulatory compliance in California

In Arizona...

- Salt River Project has used OpenET data to quantify water use changes from different forest management practices
- OpenET is a project partner with University of Arizona and Bridgestone Americas for a USDA grant to support climate smart and drought resilient agriculture in central Arizona



Visit www.openetdata.org
to learn more and
sign-up for our newsletter!

Rachel O'Connor
Environmental Defense Fund
roconnor@edf.org

